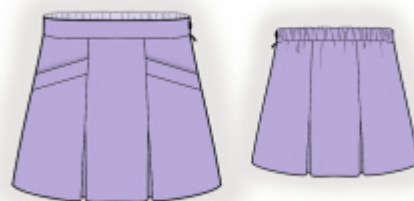


## Skirt With Counter Pleats - Sewing Pattern #7201

Recommendations on fabric: natural/synthetic suiting fabrics .

You will also need: fusible interfacing, elastic tape, its width should equal 2.0 cm; dress zipper.

Seam allowances: all seams 1 cm. Seam allowance for hem of garment – 1.5 cm.



### Note on seam allowances:

- If the pattern has double contour the seam allowances are included. They are 1 cm unless specified otherwise.
- If the pattern has single contour, the seam allowances are NOT included and need to be added when laying out the pattern.

### Note on length of fabric:

*Attention! The amount of fabric needed for your pattern is not included. It will depend on the selected pattern size, the width, and design of the fabric you plan to use. First, print all the paper patterns and lay them out at the width of fabric you plan to use (usually from 90 to 150 cm). Measure how much fabric you will need. Don't forget to account for pieces that need to be cut multiple times and pieces that are cut on the fold.*

## CUTTING:

### Note on cutting:

*On the pattern pieces, "beam" means straight of grain. Lay out your pieces accordingly. Some pieces will be cut on the fold. This is noted on the pattern piece. Mark all notches and other design features such as pleats etc. from the pattern onto your fabric.*

*When sewing the garment, pay attention to notches, they must match up.*

Main fabric:

1. Front center part - cut 1
2. Front side upper part - cut 2
3. Front side lower part - cut 2
4. Back center part - cut 1
5. Back side part - cut 2
6. Gore - cut 4
7. Pocket welt - cut 2
8. Belt — cut 1

Fusible interfacing:

1. Pocket welt - cut 2
2. Belt — cut 1

## **INSTRUCTIONS:**

1. Apply fusible interfacing to belt and pocket welts.
2. Press pocket welts in half lengthwise right side out. Pin together front side upper and lower fronts, put in between the pocket welts and sew. Press towards lower part and serge.
3. Sew gore to center front, serge and press from upper edge to bottom. Sew the same gore to side front, serge and press from upper edge to bottom. Sew side front to front up to the gore, press the seam apart. The same technique is used for sewing princess seams on the back.
4. Sew right side seam, press towards the back and serge. Serge left side edge. Sew left side seam from notch to bottom, press the seam apart. Sew in zipper.
5. Press belt in half lengthwise wrong sides together. Sew outer side of belt to upper edge of skirt, at the same time sewing corners of belt. Baste elastic band to back side of belt near side seams. Turn inside inner edge of belt and stitch-in-the-ditch along seam of belt.
6. Serge lower edge of skirt, press onto wrong side and topstitch.
7. Make buttonhole on belt and sew on a button.

## **TECHNICAL DRAWING:**

