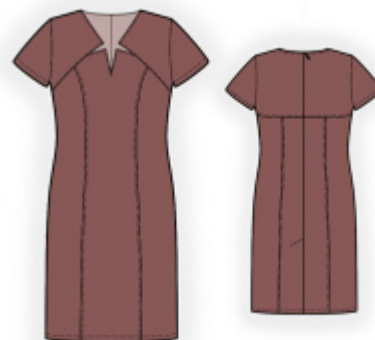


## Dress - Sewing Pattern #5961

Recommendations on fabric: natural/mixed fabric suitable for dresses.

You will also need: fusible interfacing; dress zipper.

Seam allowances: all seam allowances - 1 cm; seam allowance for hem of garment - 3.0 cm, seam allowance for hem of sleeve - 1.5 cm.



### Note on seam allowances:

- If the pattern has double contour the seam allowances are included. They are 1 cm unless specified otherwise.

- If the pattern has single contour, the seam allowances are NOT included and need to be added when laying out the pattern.

### Note on length of fabric:

*Attention! The amount of fabric needed for your pattern is not included. It will depend on the selected pattern size, the width, and design of the fabric you plan to use. First, print all the paper patterns and lay them out at the width of fabric you plan to use (usually from 90 to 150 cm). Measure how much fabric you will need. Don't forget to account for pieces that need to be cut multiple times and pieces that are cut on the fold.*

## CUTTING:

### Note on cutting:

*On the pattern pieces, "beam" means straight of grain. Lay out your pieces accordingly. Some pieces will be cut on the fold. This is noted on the pattern piece. Mark all notches and other design features such as pleats etc. from the pattern onto your fabric.*

*When sewing the garment, pay attention to notches, they must match up.*

Main fabric:

1. Back yoke - cut 2
2. Side back - cut 2
3. Center back - cut 2
4. Front yoke - cut 2
5. Side front - cut 2
6. Center front - cut 1
7. Sleeve - cut 2
8. Back neck facing - cut 2
9. Front neck facing - cut 2

10. Front slit facing – cut 1

Fusible interfacing:

1. Back neck facing – cut 2
2. Front neck facing – cut 2

## INSTRUCTIONS:

1. Apply interfacing to facings.
2. Sew darts on back yokes. Press bulk towards center. Topstitch dart at 0.1 cm from seam.
3. Apply interfacing to the vent on both sides of center back on the wrong side. Mark center seam line (vent fold-line) from the right side. Serge center back edges separately, serging the vent at the same time. Sew center back seam from zipper marker down to vent corner. Clip into seam allowance of vent in corner on right part. Press the seam apart. Press right side of vent at 1 cm and topstitch. Press vent's seam allowances towards center and fix them with machine stitch.
4. Sew side backs to center back. Serge seams and press towards center. Topstitch at 0.1 cm. Sew back yoke to back. Serge seams and press towards top. Topstitch at 0.1 cm. Sew in zipper.
5. Sew side fronts to front. Serge seams and press towards center. Topstitch at 0.1 cm.
6. Serge outer edges of front slit facing. Pin slit facing to front right sides together and sew slit edge and upper edge between notches. Clip into seam allowances near notches, carefully cut fabric between sides of slit. Trim away corners. Turn facing under and straighten. Press. Sew a decorative stitch along upper edge and slit at 0.1 cm from the edge.
7. Sew shoulder seams. Serge seams and press towards back.
8. Sew shoulder seams of facings. Press the seam apart. Serge outer edges. Pin facing on garment, right sides together. Sew the neckline on back and front yoke exactly up to the marked line of bottom seam.
9. Pin lower front between yoke and facing. Sew from neck to side seam. Trim away corners. Press onto yoke. Serge. Turn facing under and straighten. Sew a decorative stitch at 0.1 cm along back neckline, front yoke and corner, and continue on seam connecting front yoke and front.
10. Sew side seams. Serge seams and press towards back.
11. Sew sleeve seam. Serge and press seam. Sew sleeves into armholes matching notches and adjusting ease. Serge and press seam.
12. Serge bottom edge of sleeve, press onto wrong side and topstitch. Serge bottom edge of dress, press onto

wrong side at 1 cm, then at 2 cm and topstitch.

**TECHNICAL DRAWING:**

