

Dress With Pleats - Sewing Pattern #4996

Recommendations on fabric: natural/mixed fabric suitable for dresses.

You will also need: dress zipper; fusible interfacing; 2 buttons.

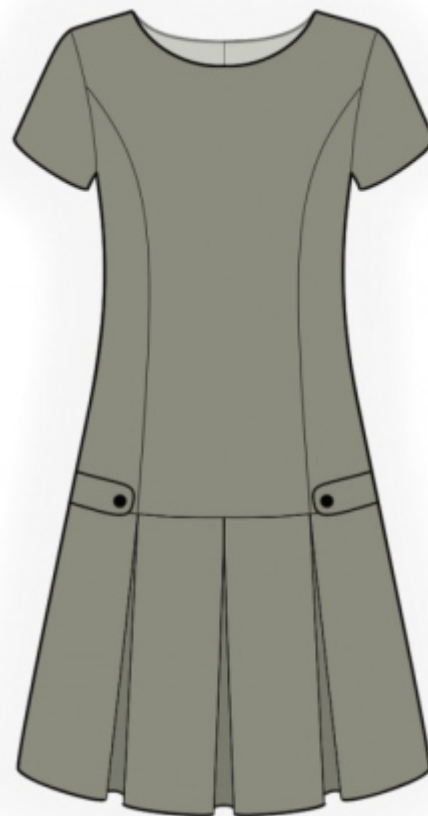
Seam allowances: all seams 1 cm. Seam allowance along lower edge of garment and lower edge of sleeve - 2 cm.

Note on seam allowances:

- If the pattern has double contour the seam allowances are included. They are 1 cm unless specified otherwise.
- If the pattern has single contour, the seam allowances are NOT included and need to be added when laying out the pattern.

Note on length of fabric:

Attention! The amount of fabric needed for your pattern is not included. It will depend on the selected pattern size, the width, and design of the fabric you plan to use. First, print all the paper patterns and lay them out at the width of fabric you plan to use (usually from 90 to 150 cm). Measure how much fabric you will need. Don't forget to account for pieces that need to be cut multiple times and pieces that are cut on the fold.



CUTTING:

Note on cutting:

On the pattern pieces, "beam" means straight of grain. Lay out your pieces accordingly. Some pieces will be cut on the fold. This is noted on the pattern piece. Mark all notches and other design features such as pleats etc. from the pattern onto your fabric.

When sewing the garment, pay attention to notches, they must match up.

Main fabric:

1. Center back - cut 2
2. Side back - cut 2
3. Side front - cut 2
4. Center front - cut 1 on fold
5. Lower back - cut 1 on fold
6. Lower front - cut 1 on fold
7. Sleeve - cut 2

8. Back neck facing - cut 2
9. Front neck facing - cut 1
10. Strap - cut 2

Fusible interfacing:

1. Back neck facing - cut 2
2. Front neck facing - cut 1
3. Strap - cut 2

INSTRUCTIONS:

1. Apply fusible interfacing.
2. Sew side backs to center back, press towards center and serge. Serge the center back edges separately. Sew the center back seam from zipper mark to hem, press the seam apart. Sew in zipper.
3. Sew side fronts to front, press towards center and serge.
4. Make and baste box pleats on lower back and on lower front. Sew upper backs to lower backs, sew upper fronts to lower fronts, press towards top and serge.
5. Pin strap in half lengthwise, right sides together, and sew longer and shaped edges. Trim seam allowances, turn right side out strap onto right side, straighten, press. Make a buttonhole.
6. Sew shoulder seams, press towards the back and serge. Sew side seams, inserting straps, press towards the back and serge.
7. Sew the shoulder seams of the neckline facings, press the seam apart. Serge the outer edge. Pin facing to garment right sides together and sew the neckline. Fold the facing onto wrong side, straighten, press. Slipstitch the facing to the garment along shoulder seams, center back seam.
8. Sew sleeve seam, serge and press. Sew sleeves into armholes, matching notches, serge and press.
9. Serge lower edge of dress and lower edge of sleeves, press onto wrong side and topstitch.
10. Sew on buttons according to button holes.

TECHNICAL DRAWING:

