

Dress With Pockets - Sewing Pattern #4993

Recommendations on fabric: natural/mixed fabric suitable for dresses.

You will also need: dress zipper; fusible interfacing; lining.

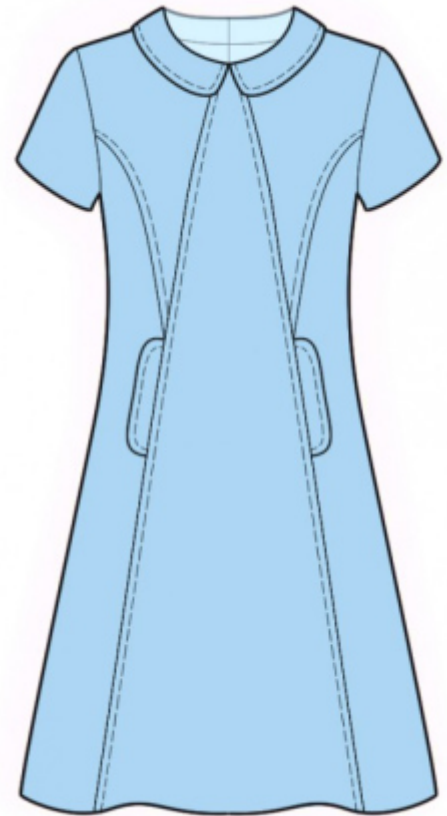
Seam allowances: all seams 1 cm. Seam allowance along hem and hem of sleeve - 2 cm.

Note on seam allowances:

- If the pattern has double contour the seam allowances are included. They are 1 cm unless specified otherwise.
- If the pattern has single contour, the seam allowances are NOT included and need to be added when laying out the pattern.

Note on length of fabric:

Attention! The amount of fabric needed for your pattern is not included. It will depend on the selected pattern size, the width, and design of the fabric you plan to use. First, print all the paper patterns and lay them out at the width of fabric you plan to use (usually from 90 to 150 cm). Measure how much fabric you will need. Don't forget to account for pieces that need to be cut multiple times and pieces that are cut on the fold.



CUTTING:

Note on cutting:

On the pattern pieces, "beam" means straight of grain. Lay out your pieces accordingly. Some pieces will be cut on the fold. This is noted on the pattern piece. Mark all notches and other design features such as pleats etc. from the pattern onto your fabric.

When sewing the garment, pay attention to notches, they must match up.

Main fabric:

1. Back - cut 2
2. Side front - cut 2
3. Center front - cut 1 on fold
4. Upper front - cut 2
5. Sleeve - cut 2
6. Flap - cut 4
7. Collar - cut 4

Lining:

1. Pocket bag - cut 4
2. Back lining - cut 2
3. Side front lining - cut 2
4. Center front lining - cut 1 on fold

Fusible interfacing:

1. Collar - cut 2
2. Flap - cut 2

INSTRUCTIONS:

1. Apply fusible interfacing.
2. Sew darts on back. Press bulk towards center. Serge center back edges separately. Sew center back seam from notch to bottom. Press apart center seam, pressing the slit at the same time. Sew in zipper.
3. Pin side front to upper front, right sides together. Sew princess seam. Serge seams and press towards center. Sew a decorative stitch at 0.5 cm from seam.
4. Pin flaps together, right sides together and sew outer edges. Trim seam allowances, turn right side out and press. Sew a decorative stitch at 0.5 cm from the edge.
5. Apply fusible interfacing to pocket opening on side front and on center front. Pin flap onto pocket bag and sew. Pin pocket bag with flap onto center front, right side down, flap is placed between Shell and pocket bag, and sew. Start and stop stitching exactly at the marked line of pocket opening. Sew a decorative stitch along pocket opening.
6. Sew pocket bag to side front. Start and stop stitching exactly at the marked line of pocket opening. Sew side front to front, sewing the pocket bags at the same time, serge. Sew a decorative stitch in two steps: from armhole to pocket, and from pocket down to hem. Slipstitch flap onto side piece.
7. Sew side and shoulder seams, press towards the back and serge.
8. Sew darts and seams on lining. Serge lower edge of lining.
9. Pin collars together by two, right sides together and sew along outer edge. Start and stop stitching exactly at the marked line of the neckline seam of collar. Trim seam allowances, trim away corner, clip into curves. Turn collar right side out and press. Sew a decorative stitch along the edge at 0.5 cm.
10. Sew lower collars into the neckline of dress, press the seam apart. Sew upper collars into the neckline of lining, press the seam apart. Slip stitch together seam allowances along collar seams.

11. Slipstitch lining to zipper tape. Baste lining to Shell along armhole edges. Treat as one piece in the future.
12. Sew sleeve seam. Serge and press towards back. Sew sleeves into armholes. Serge and press.
13. Serge lower edge of dress and lower edge of sleeves, press onto wrong side and topstitch.

TECHNICAL DRAWING:

