

Dress With Plunging Neckline - Sewing Pattern #4943

Recommendations on fabric: natural/mixed fabric suitable for dresses.

You will also need: fusible interfacing; dress zipper.

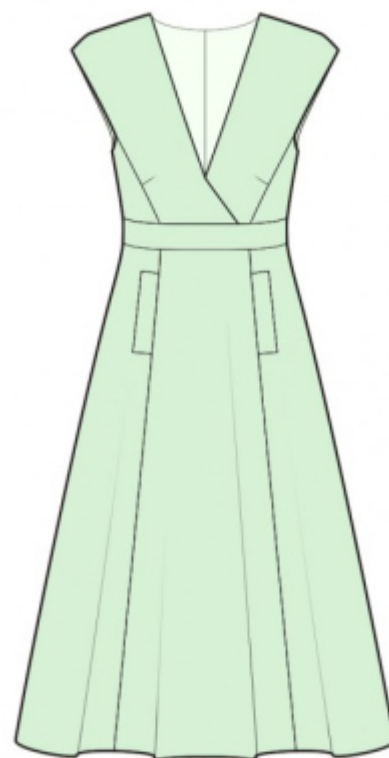
Seam allowances: all seams 1 cm; seam allowance for hem of dress — 2 cm.

Note on seam allowances:

- If the pattern has double contour the seam allowances are included. They are 1 cm unless specified otherwise.
- If the pattern has single contour, the seam allowances are NOT included and need to be added when laying out the pattern.

Note on length of fabric:

Attention! The amount of fabric needed for your pattern is not included. It will depend on the selected pattern size, the width, and design of the fabric you plan to use. First, print all the paper patterns and lay them out at the width of fabric you plan to use (usually from 90 to 150 cm). Measure how much fabric you will need. Don't forget to account for pieces that need to be cut multiple times and pieces that are cut on the fold.



CUTTING:

Note on cutting:

On the pattern pieces, "beam" means straight of grain. Lay out your pieces accordingly. Some pieces will be cut on the fold. This is noted on the pattern piece. Mark all notches and other design features such as pleats etc. from the pattern onto your fabric.

When sewing the garment, pay attention to notches, they must match up.

Main fabric:

1. Upper back - cut 2
2. Lower back - cut 2
3. Upper right front - cut 1
4. Upper left front - cut 1
5. Upper side front - cut 2
6. Lower center front - cut 1 on fold
7. Lower side front - cut 2

8. Pocket welt — cut 2
9. Back neck facing — cut 2
10. Front neck facing right — cut 1
11. Front neck facing left — cut 1
12. Pocket bag — cut 4
13. Front belt - cut 1
14. Back belt - cut 2

Fusible interfacing:

1. Pocket welt — cut 2
2. Back neck facing — cut 2
3. Front neck facing right — cut 1
4. Front neck facing left — cut 1

INSTRUCTIONS:

1. Apply fusible interfacing.
2. Sew darts on upper back, press the inner part towards center. Sew back belt. Serge and press towards bottom. Make and baste pleat on lower back. Fold bulk towards center. Sew upper back to lower back, press seam allowances towards belt and serge.
3. Serge center back edges separately. Sew center back seam from notch for zipper to bottom, press the seam apart. Sew in zipper.
4. Sew darts on upper fronts, press bulk towards top. Sew side fronts to front, press towards center and serge.
5. Serge outer edge of left facing of front neckline. Pin facing onto left front right sides together and sew the neckline. Clip seam allowances, turn facing onto wrong side, press.
6. Serge outer edge of right facing of front neckline. Pin right upper front to left upper front right sides together. Pin neckline facing to right upper front right sides together (left front is between shell and facing) and sew neckline edge, continuing the seam up to lower edge. Serge the seam allowances, turn facing onto wrong side, press. Sew front belt to upper piece. Serge and press towards belt.
7. Fold off-set welt in half lengthwise right sides together and sew short sides. Trim away corners, turn off-set welt right side out, straighten, press. Sew pocket bag to off-set welt.
8. Pin pocket bag right side down onto right side of lower side front, pin pocket bag with off-set welt right side down onto lower center front, matching the markings. Sew pocket bag to seam allowance of pocket opening. Fold away the seam of side front and topstitch it onto pocket lining.
9. Sew princess seams of lower front, sewing the pocket bags at the same time. Serge seams and press

towards center. Topstitch short sides of off-set welt onto the side piece. Sew lower front to front belt. Serge and press towards belt.

10. Serge outer edge of back neckline facing. Pin back neckline facing onto self garment right sides together and sew neckline exactly up to the marked line of shoulder seam. Clip into curves.

11. Sew shoulder seams, placing shoulder edge of front between facing and the shoulder edge of back. Press seams towards back, serge. Turn pieces right side out, press.

12. Sew side seams, press towards the back and serge.

13. Cut or use ready-made bias tape, its width should equal 4 cm and length should equal the length of armhole + 5 cm. Fold bias tape in half lengthwise right side out and press. Pin bias tape onto edge of armhole from the right side and sew. Clip into seam allowances. Fold bias tape onto wrong side and topstitch onto main piece along the seam. Press seam.

14. Seam allowance along hem of garment serge, press onto wrong side and topstitch.

TECHNICAL DRAWING:

