

Dress With Chiffon Sleeves - Sewing Pattern #4914

Recommendations on fabric: natural/mixed fabric suitable for dresses; chiffon.

You will also need: dress zipper, fusible interfacing; 2 buttons.

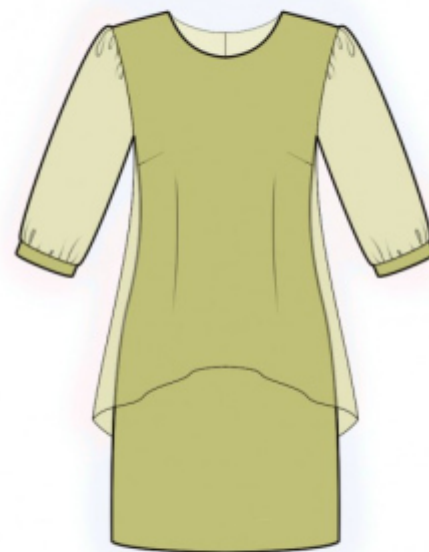
Seam allowances: all seams 1 cm. Seam allowance for hem of garment - 2 cm. Seam allowances along lower edges of fly back piece and fly front piece - 0 cm.

Note on seam allowances:

- If the pattern has double contour the seam allowances are included. They are 1 cm unless specified otherwise.
- If the pattern has single contour, the seam allowances are NOT included and need to be added when laying out the pattern.

Note on length of fabric:

Attention! The amount of fabric needed for your pattern is not included. It will depend on the selected pattern size, the width, and design of the fabric you plan to use. First, print all the paper patterns and lay them out at the width of fabric you plan to use (usually from 90 to 150 cm). Measure how much fabric you will need. Don't forget to account for pieces that need to be cut multiple times and pieces that are cut on the fold.



CUTTING:

Note on cutting:

On the pattern pieces, "beam" means straight of grain. Lay out your pieces accordingly. Some pieces will be cut on the fold. This is noted on the pattern piece. Mark all notches and other design features such as pleats etc. from the pattern onto your fabric.

When sewing the garment, pay attention to notches, they must match up.

Main fabric:

1. Back - cut 2
2. Front - cut 1 on fold
3. Cuff - cut 2

Main fabric 1:

1. Back fly piece - cut 2

2. Front decorative piece - cut 1 on fold
3. Sleeve - cut 2

INSTRUCTIONS:

1. Sew darts on fronts and on backs. Press bulk of shoulder and waist darts towards center, press bulk of bust darts towards top.
2. Sew side and shoulder seams. Serge seams and press towards back.
3. Sew side and shoulder seams of fly pieces. Serge seams and press towards back. Finish lower edges of fly back piece and fly front piece with thin rolled hem.
4. Pin fly piece onto dress, right side up, and baste together along neckline, armholes and center back edge. Serge center edges. Sew seam from notch for zipper down to hem. Sew in zipper.
5. Cut (or take ready) bias tape, its width should equal 4 cm and length should equal the length of neckline + 3 cm. Fold bias tape in half lengthwise right side out and press. Pin bias tape to neckline from the right side and sew. Turn bias tape onto wrong side and topstitch onto main piece along the seam. Press seam.
6. Sew a gathering stitch along a sleeve cap and gather fullness. Serge sleeve edges. Sew sleeve seam up to mark for slit. Press the seam apart. Stitch seam allowances along the slit at 0.2 cm. from the edge. Sew sleeves into armholes, serge and press. Sew a gathering stitch along lower edge of sleeve and gather fullness.
7. Fold cuff in half lengthwise right sides together and sew corners. Sew outer side of cuff to sleeve. Fold under the seam allowance of the inner side inside and topstitch into seam of.
8. Serge hem of dress, press onto wrong side and topstitch. Make buttonholes on cuffs and sew on buttons.

TECHNICAL DRAWING:

