

Dress With Front Vent - Sewing Pattern #4913

Recommendations on fabric: natural/mixed fabric suitable for dresses.

You will also need: dress zipper; fusible interfacing.

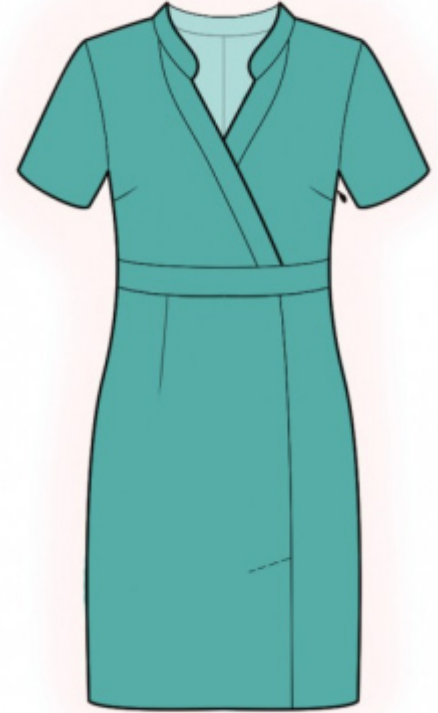
Seam allowances: all seams 1 cm. Seam allowance along hem of garment and hem of sleeve - 2.5 cm, seam allowance along vent - 6 cm.

Note on seam allowances:

- If the pattern has double contour the seam allowances are included. They are 1 cm unless specified otherwise.
- If the pattern has single contour, the seam allowances are NOT included and need to be added when laying out the pattern.

Note on length of fabric:

Attention! The amount of fabric needed for your pattern is not included. It will depend on the selected pattern size, the width, and design of the fabric you plan to use. First, print all the paper patterns and lay them out at the width of fabric you plan to use (usually from 90 to 150 cm). Measure how much fabric you will need. Don't forget to account for pieces that need to be cut multiple times and pieces that are cut on the fold.



CUTTING:

Note on cutting:

On the pattern pieces, "beam" means straight of grain. Lay out your pieces accordingly. Some pieces will be cut on the fold. This is noted on the pattern piece. Mark all notches and other design features such as pleats etc. from the pattern onto your fabric.

When sewing the garment, pay attention to notches, they must match up.

Main fabric:

1. Upper back - cut 2
2. Back belt - cut 1
3. Lower back - cut 2
4. Lower front right - cut 1
5. Lower front left - cut 1
6. Front belt - cut 1

7. Upper front right - cut 1
8. Upper front left - cut 1
9. Placket right - cut 2
10. Placket left - cut 2
11. Stand collar - cut 2
12. Sleeve - cut 2

Fusible interfacing:

1. Placket right - cut 1
2. Placket left - cut 1
3. Stand collar - cut 1

INSTRUCTIONS:

1. Apply fusible interfacing.
2. Sew darts on back and front, press the bulk of waist darts towards center, press the bulk of bust darts towards top.
3. Sew center back seam on upper back and on lower back, press towards left and serge.
4. Sew back belt to upper back, press seam allowances towards belt and serge. Sew lower back to back belt, press seam allowances towards belt and serge.
5. On left lower front, along vertical edge of vent, cut 5 cm. Apply fusible interfacing onto vent area from the wrong side, on both lower fronts. Mark princess line from the right side (vent fold line). Press left part along vent fold, on the right side press onto wrong side only the seam allowance of right side of vent (6 cm). Match pieces along the princess seam and baste together along upper edge of the vent. Serge edges of princess seams on lower front separately on each piece. Serge seam allowances of vent. Sew princess seam on lower front (sew side lower front to center lower front) from upper edge to vent corner. Clip into seam allowance of vent in corner on right part. Seam Allowances *шва* press apart, press seam allowances of the vent and sew them together by machine.
6. Left upper front. Pin plackets together, right sides together and sew the outer edge. Clip into curves, turn the piece right side out and press. Serge outer edge of inner placket. Sew outer edge of placket to front, press seam allowances onto placket. Topstitch inner placket into the seam of outer placket (stitch-in-the-ditch). Serge slanted edge.
Right upper front. Pin plackets together, right sides together and sew the outer edge. Clip into curves, turn the piece right side out and press. Serge outer edge of inner placket. Sew outer edge of placket to front, press seam allowances onto placket.
Put right front onto left front and stitch-in-the-ditch along seam of outer placket, fixing pieces together.
7. Sew front belt to upper front, press seam allowances towards belt and serge. Sew lower front to front belt,

press seam allowances towards belt and serge.

8. Serge left side edges separately. Sew the left side edge from armhole to notch and from notch for zipper to bottom. Sew in zipper. Sew shoulder and right side edges, press towards the back and serge.

9. Pin together parts of stand collar, right sides together and sew along outer edge (start and stop stitching exactly at the marked seam line). Clip seam allowances, turn stand collar right side out and press. Sew upper stand collar into neckline, turn inside the seam allowance of lower stand collar and stitch-in-the-ditch along seam of upper one stand collars.

10. Sew sleeve seams, serge and press. Sew sleeves into armholes, serge and press.

11. Serge lower edge of garment and lower edge of sleeve, press onto wrong side and topstitch.

TECHNICAL DRAWING:

