

Dress With Whole Cut Sleeve - Sewing Pattern #4890

Recommendations on fabric: natural/mixed fabric suitable for dresses.

You will also need: dress zipper.

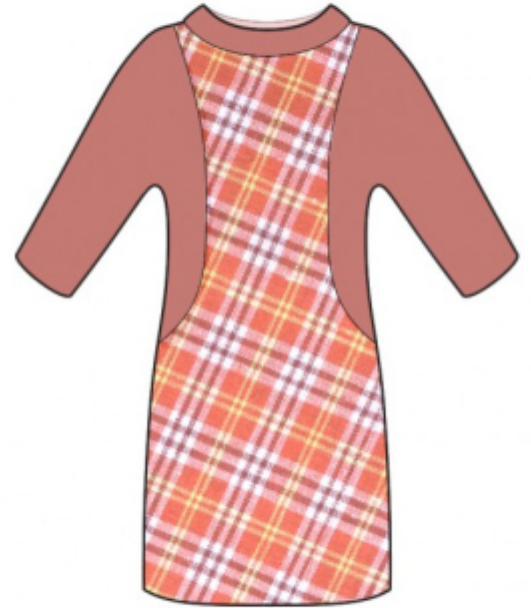
Seam allowances: all seams 1 cm; seam allowance for hem of dress - 3 cm; hem of sleeve - 2.0 cm, seam allowance along the slit - 2 cm.

Note on seam allowances:

- If the pattern has double contour the seam allowances are included. They are 1 cm unless specified otherwise.
- If the pattern has single contour, the seam allowances are NOT included and need to be added when laying out the pattern.

Note on length of fabric:

Attention! The amount of fabric needed for your pattern is not included. It will depend on the selected pattern size, the width, and design of the fabric you plan to use. First, print all the paper patterns and lay them out at the width of fabric you plan to use (usually from 90 to 150 cm). Measure how much fabric you will need. Don't forget to account for pieces that need to be cut multiple times and pieces that are cut on the fold.



CUTTING:

Note on cutting:

On the pattern pieces, "beam" means straight of grain. Lay out your pieces accordingly. Some pieces will be cut on the fold. This is noted on the pattern piece. Mark all notches and other design features such as pleats etc. from the pattern onto your fabric.

When sewing the garment, pay attention to notches, they must match up.

Main fabric:

1. Back sleeve — cut 2
2. Front sleeve — cut 2
3. Collar - cut 1
4. Pocket bag - cut 2

Main fabric 1:

1. Back - cut 2
2. Front - cut 1 on fold

INSTRUCTIONS:

1. Serge the center back edges separately. Sew center back seam from notch for zipper down to notch for slit. Press seam apart, pressing the slit for zipper and hem slit at the same time. Sew in zipper. Topstitch hem slit at 0.1 cm from fold.
2. Sew back sleeve to back, press seam allowances towards sleeve, serge.
3. Sew pocket bags to front. Serge the seam allowances. Sew front sleeve to front, sewing seam allowances of pocket bags at the same time, press towards center, serge.
4. Sew shoulder seams, press towards the back and serge. Sew sleeve seam and side seam continuously, press towards the back and serge.
5. Fold collar in half lengthwise right sides together and sew corners. Start stitching exactly at the marked seam line. Trim away corners, turn right side out and press. Sew the outer collar into neckline. Fold under the seam allowance of the inner side inside and stitch in the ditch.
6. Serge the hem of the garment and the hem of sleeve, press onto wrong side and finish with hidden stitches.

TECHNICAL DRAWING:

