

## Wrapped Vest - Sewing Pattern #4874

Recommendations on fabric: natural/mixed fabric suitable for dresses.

You will also need: fusible interfacing; buckle; 2 buttons.

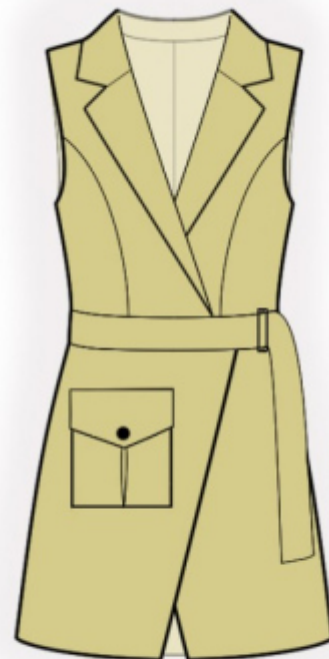
Seam allowances: all seams 1 cm.

### Note on seam allowances:

- If the pattern has double contour the seam allowances are included. They are 1 cm unless specified otherwise.
- If the pattern has single contour, the seam allowances are NOT included and need to be added when laying out the pattern.

### Note on length of fabric:

*Attention! The amount of fabric needed for your pattern is not included. It will depend on the selected pattern size, the width, and design of the fabric you plan to use. First, print all the paper patterns and lay them out at the width of fabric you plan to use (usually from 90 to 150 cm). Measure how much fabric you will need. Don't forget to account for pieces that need to be cut multiple times and pieces that are cut on the fold.*



## CUTTING:

### Note on cutting:

*On the pattern pieces, "beam" means straight of grain. Lay out your pieces accordingly. Some pieces will be cut on the fold. This is noted on the pattern piece. Mark all notches and other design features such as pleats etc. from the pattern onto your fabric.*

*When sewing the garment, pay attention to notches, they must match up.*

Main fabric:

1. Center back - cut 2
2. Side back - cut 2
3. Center front - cut 2
4. Side front - cut 2
5. Collar - cut 2
6. Back skirt - cut 1 on fold
7. Front skirt right - cut 1

8. Front skirt left - cut 1
9. Belt right - cut 2
10. Belt left - cut 2
11. Smaller belt - cut 1
12. Back neck facing - cut 1
13. Center front facing - cut 2
14. Pocket - cut 1
15. Flap - cut 2

Lining:

1. Center back - cut 2
2. Side back - cut 2
3. Center front - cut 2
4. Side front - cut 2
6. Back skirt - cut 1 on fold
7. Front skirt right - cut 1
8. Front skirt left - cut 1

Attention! Front and back pieces from lining are cut using the sewing pattern pieces for the main fabric, with the exception for the areas of center front facing and back neckline facing.

Fusible interfacing:

1. Center front - cut 2
2. Center front facing — cut 2
3. Collar - cut 1
4. Back neck facing — cut 1
5. Belt right - cut 1
6. Belt left - cut 1

## **INSTRUCTIONS:**

1. Apply fusible interfacing.
2. Sew side backs to center back, seam allowances and press towards the center. Sew center back seam. Press the seam apart.
3. Sew side fronts to front, press towards center.
4. Sew shoulder and side seams, seam allowances and press apart.
5. Pin upper collar to lower collar and sew the corners and the outer edge. Start and stop sewing exactly at the marked line of the seam between collar and garment. Trim away corners, snip into seam allowance near the mark. Turn the collar right side out, straighten and press.

6. Sew shoulder edges of center front facings and back neckline facing, press the seam apart.
7. Place center front facing onto front right sides together, pin together and sew along the center front edge and the lapel. Sew upwards up to the notch marking the end of collar seam. Trim away corners. Turn center front facings right side out, straighten seams.
8. Sew the lower collar into the neckline of the garment, sew upper collar into the neckline of the back neckline facing and of the center front facing. Press apart seam allowances of collars and baste together close to seam.
9. Sew seams on lining. Sew lining to center front facings and to facings. Sew armhole in two steps: first sew the front armhole, then sew the back armhole.
10. Make and baste a box pleat. Serge the upper edge of pocket. Fold under seam allowance along upper edge and topstitch. Fold seam allowances of pocket onto wrong side and press. Pin pocket according to markings and topstitch. Sew decorative stitches along side and lower edges at 0.2 and 0.5 cm. Pin flaps together, right sides together and sew along the lower edge and the side edges. Trim seam allowances, trim away corners, turn right side out and press. Sew a decorative stitchline at 0.2 and 0.5 cm. Make buttonhole on flap. Pin flap, right side down, onto the right side of front and topstitch at 1 cm above the pocket. Fold flap down and topstitch it with two decorative stitches at 0.2 - 0.5 cm.
11. Sew side seams of lower parts. Press the seam apart. Sew and press apart side edges of lining of lower parts. Pin lining onto lower part and sew along lower and center edges. Trim away corners, turn right side out and press.
12. Serge upper and lower edges of smaller belt, turn inside and topstitch. Thread belt into buckle and baste together ends of the belt. Sew side edge of outer belts, inserting the belt part with the buckle. Press the seam apart. Sew side edge of inner belts, press the seam apart. Sew outer belt to upper and lower parts of the vest. Press towards belt. Pin upper edges of belt together right sides together(upper part of the vest is in between the belts) and sew. Fold inner belt down and press. Sew the open edge of the belt. Trim seam allowances and turn right side out. Fold inside lower seam allowance of inner belt and stitch-in-the-ditch into the seam of upper belt. Sew a decorative stitchline at 0.2 and 0.5 cm.
13. Make a button hole on left belt. Sew on inner button. Sew on button onto the pocket.

## **TECHNICAL DRAWING:**

