

Asymmetrical Dress - Sewing Pattern #4868

Recommendations on fabric: knit fabric of small stretchiness or natural/mixed fabrics with elastane suitable for dresses in contrasting or similar color.

You will also need: dress zipper, fusible interfacing, 8 buttons.

Seam allowances: all seams 1 cm; seam allowance along the slit - 2 cm; seam allowance for hem of dress - 3.0 cm.

Note on seam allowances:

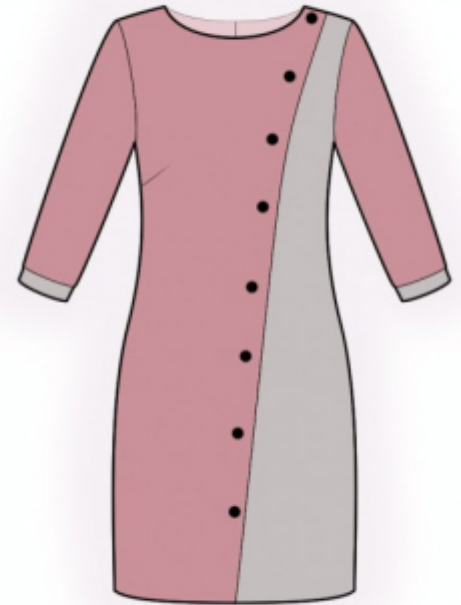
- If the pattern has double contour the seam allowances are included. They are 1 cm unless specified otherwise.
- If the pattern has single contour, the seam allowances are NOT included and need to be added when laying out the pattern.

Note on length of fabric:

Attention! The amount of fabric needed for your pattern is not included. It will depend on the selected pattern size, the width, and design of the fabric you plan to use. First, print all the paper patterns and lay them out at the width of fabric you plan to use (usually from 90 to 150 cm). Measure how much fabric you will need. Don't forget to account for pieces that need to be cut multiple times and pieces that are cut on the fold.

Note on working with stretchy fabric:

Knitted fabric pieces are sewn together with special elastic or narrow zig-zag stitch. Seam allowance on hems can be stitched with twin needles to save stretchiness. Pieces can also be sewn together with a serger. When serging, cut seam allowances to 0.6 - 0.8 cm.



CUTTING:

Note on cutting:

On the pattern pieces, "beam" means straight of grain. Lay out your pieces accordingly. Some pieces will be cut on the fold. This is noted on the pattern piece. Mark all notches and other design features such as pleats etc. from the pattern onto your fabric.

When sewing the garment, pay attention to notches, they must match up.

Main fabric:

1. Back - cut 2

2. Right front - cut 1
3. Sleeve - cut 2

Main fabric 1:

1. Left front - cut 1
2. Cuff - cut 2

Fusible interfacing:

1. Cuff - cut 2

INSTRUCTIONS:

1. Apply fusible interfacing to cuffs.
2. Sew darts on back, press towards center.
3. Serge the center back edges separately. Sew center back seam from notch for zipper down to notch for slit. Press the seam apart. Sew in zipper. Topstitch seam allowances along slit at 0.2 cm.
4. Sew dart on right front. Press bulk towards top. Sew side front to front, press towards center and serge.
5. Sew shoulder seams. Serge seams and press towards back. Cut or use ready-made bias tape, its width should equal 4 cm and length should equal the length of neckline + 5 cm. Fold bias tape in half lengthwise right side out and press. Pin bias tape to neckline from the right side and sew. Clip into seam allowances. Fold bias tape onto wrong side and topstitch onto main piece along the seam. Press seam.
6. Sew side seams. Serge seams and press towards back.
7. Sew sleeve seam. Sew sleeves into armholes matching notches, adjusting ease on sleeve cap, press seam, serge.
8. Fold cuff in half lengthwise, right sides together and sew short sides. Turn cuff right side out, straighten, press. Pin short sides of cuff one onto another, matching notches. Sew cuff to lower edge of sleeve, press seam allowances towards sleeve, serge. Topstitch seam allowances onto garment with seam 0.5 cm.
9. Seam allowance for hem press onto wrong side and finish with hidden stitches.
10. Sew on buttons according to markings.

TECHNICAL DRAWING:

