

## Quilted Vest - Sewing Pattern #4854

Recommendations on fabric: quilted natural/mixed raincoat fabric in contrasting or similar colours.

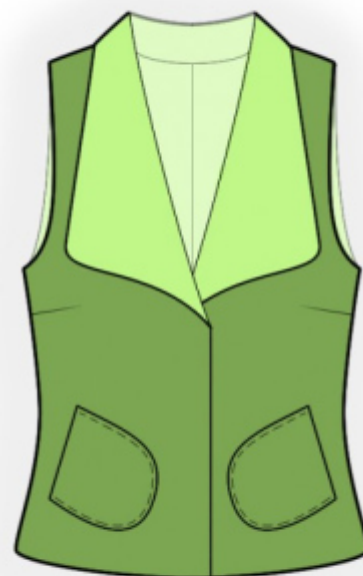
Seam allowances: all seams 1 cm.

### Note on seam allowances:

- If the pattern has double contour the seam allowances are included. They are 1 cm unless specified otherwise.
- If the pattern has single contour, the seam allowances are NOT included and need to be added when laying out the pattern.

### Note on length of fabric:

Attention! The amount of fabric needed for your pattern is not included. It will depend on the selected pattern size, the width, and design of the fabric you plan to use. First, print all the paper patterns and lay them out at the width of fabric you plan to use (usually from 90 to 150 cm). Measure how much fabric you will need. Don't forget to account for pieces that need to be cut multiple times and pieces that are cut on the fold.



## CUTTING:

### Note on cutting:

On the pattern pieces, "beam" means straight of grain. Lay out your pieces accordingly. Some pieces will be cut on the fold. This is noted on the pattern piece. Mark all notches and other design features such as pleats etc. from the pattern onto your fabric.

When sewing the garment, pay attention to notches, they must match up.

Main fabric:

1. Back - cut 2
2. Front - cut 2
3. Pocket - cut 4

Main fabric 1:

1. Back - cut 2

2. Front - cut 2

### **INSTRUCTIONS:**

1. Sew center seam on outer back, press the seam apart.
2. Sew darts on front, press bulk towards top.
3. Sew shoulder and side seams, press the seam apart. Sew collar seam, press the seam apart. Clip into seam allowance near shoulder seam and sew collar into neckline.
4. Sew inner waistcoat in the same way, leaving an opening in left side seam.
5. Pin pockets together right sides together and sew around all edges, leaving an opening. Clip seam allowances, trim away corners. Turn right side out through the opening. Sew the opening closed by hand. Topstitch pocket according to the notch onto right side.
6. Pin inner waistcoat and outer waistcoat right sides together and sew around center front, collar and hem. Turn right side out through the opening in side seam. Sew armhole in two steps: first sew the front armhole, then sew the back armhole. Sew the opening in side seam closed.

### **TECHNICAL DRAWING:**

