

A-Line Dress - Sewing Pattern #4842

Recommendations on fabric: thin natural/mixed fabric suitable for dresses.

You will also need: dress zipper; fusible interfacing.

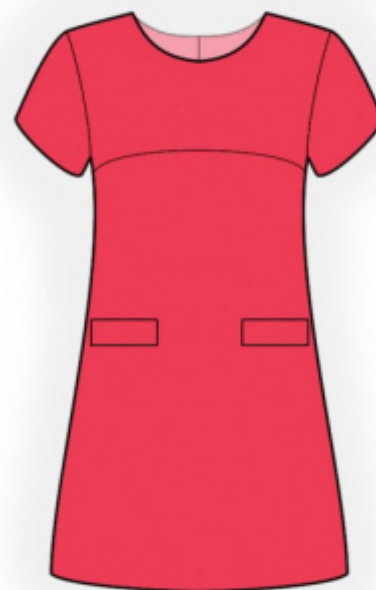
Seam allowances: all seams 1 cm. Seam allowance along hem – 3.0 cm, seam allowance of sleeve hem – 2 cm.

Note on seam allowances:

- If the pattern has double contour the seam allowances are included. They are 1 cm unless specified otherwise.
- If the pattern has single contour, the seam allowances are NOT included and need to be added when laying out the pattern.

Note on length of fabric:

Attention! The amount of fabric needed for your pattern is not included. It will depend on the selected pattern size, the width, and design of the fabric you plan to use. First, print all the paper patterns and lay them out at the width of fabric you plan to use (usually from 90 to 150 cm). Measure how much fabric you will need. Don't forget to account for pieces that need to be cut multiple times and pieces that are cut on the fold.



CUTTING:

Note on cutting:

On the pattern pieces, "beam" means straight of grain. Lay out your pieces accordingly. Some pieces will be cut on the fold. This is noted on the pattern piece. Mark all notches and other design features such as pleats etc. from the pattern onto your fabric.

When sewing the garment, pay attention to notches, they must match up.

Main fabric:

1. Back - cut 2
2. Front - cut 1 on fold
3. Yoke - cut 1 on fold
4. Back neck facing - cut 2
5. Front neck facing - cut 1
6. Sleeve - cut 2
7. Flap - cut 2

Fusible interfacing:

1. Back neck facing - cut 2
2. Front neck facing - cut 1
3. Flap - cut 2

INSTRUCTIONS:

1. Apply fusible interfacing to facings and to flaps.
2. Serge center back edges separately. Sew center back seam from notch to bottom. Press apart center seam. Sew in zipper.
3. Fold flap in half, right sides together and sew along two shorter edges. Trim seam allowances, trim away corners, turn right side out. Press flap. Serge upper edge. Topstitch flap onto front according to markings (fold flap towards top). Fold flap towards bottom and topstitch, fixing it in place.
4. Sew yoke to front. Serge and press towards top.
5. Sew side and shoulder seams, press towards the back and serge.
6. Sew the shoulder seams of the neckline facings, press the seam apart. Serge the outer edge. Pin facing to garment right sides together and sew the neckline. Fold the facing onto wrong side, straighten, press. Slip stitch facing to self garment along shoulder seams and center back seam.
7. Sew sleeve seam. Serge and press. Sew sleeve into armhole, matching notches. Serge and press.
8. Serge lower edge of dress and lower edge of sleeves, press onto wrong side and topstitch.

TECHNICAL DRAWING:

