

## Dress With Yoke And Front Box Pleat - Sewing Pattern #4827

Recommendations on fabric: natural/mixed fabric suitable for dresses.

You will also need: fusible interfacing.

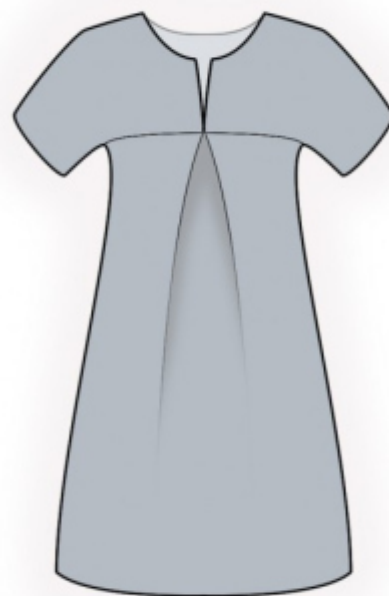
Seam allowances: all seams 1 cm; seam allowance for hem - 2.0 cm; seam allowance for hem of sleeve - 2.0 cm.

### Note on seam allowances:

- If the pattern has double contour the seam allowances are included. They are 1 cm unless specified otherwise.
- If the pattern has single contour, the seam allowances are NOT included and need to be added when laying out the pattern.

### Note on length of fabric:

*Attention! The amount of fabric needed for your pattern is not included. It will depend on the selected pattern size, the width, and design of the fabric you plan to use. First, print all the paper patterns and lay them out at the width of fabric you plan to use (usually from 90 to 150 cm). Measure how much fabric you will need. Don't forget to account for pieces that need to be cut multiple times and pieces that are cut on the fold.*



## CUTTING:

### Note on cutting:

*On the pattern pieces, "beam" means straight of grain. Lay out your pieces accordingly. Some pieces will be cut on the fold. This is noted on the pattern piece. Mark all notches and other design features such as pleats etc. from the pattern onto your fabric.*

*When sewing the garment, pay attention to notches, they must match up.*

Main fabric:

1. Back yoke - cut 1 on fold
2. Back - cut 1 on fold
3. Front yoke - cut 2
4. Front - cut 1 on fold
5. Front neck facing - cut 2
6. Back neck facing - cut 1

Fusible interfacing:

1. Front neck facing - cut 2
2. Back neck facing - cut 1

## **INSTRUCTIONS:**

1. Apply interfacing to facings.
2. Sew back yoke to yoke, press seam allowances towards yoke and serge.
3. Make and baste a box pleat on front. Sew center seam on front yoke from notch to bottom, press the seam apart. Sew front yoke to front, press seam allowances towards yoke and serge.
4. Sew shoulder seams, press towards the back and serge. Sew lower sleeve seams, and continue to sew side seams, press towards the back and serge.
5. Sew center edge of front neckline facings from notch to bottom, press the seam apart. Sew shoulder seams of facings, press the seam apart. Serge the outer edge. Pin facing to dress right sides together, adjusting neckline edges. Sew neckline edge and neckline opening. Clip into curves, trim away corners, trim seam allowance to 0.1-0.2 cm at the edge of neckline opening. Turn the pieces right side out, straighten and press. Slipstitch facing to shoulder seams and to seam of front yoke.
6. Serge hem of garment and hem of sleeve, press onto wrong side and topstitch.

## **TECHNICAL DRAWING:**

