

Vest With Belt - Sewing Pattern #4821

Recommendations on fabric: natural/mixed suiting fabric.

You will also need: fusible interfacing; lining; 1 buckle; 1 button.

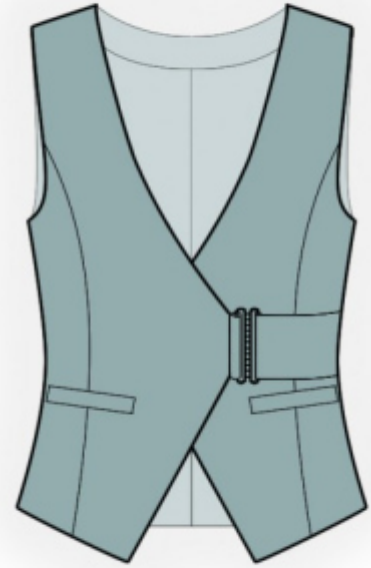
Seam allowances: all seams 1 cm. Seam allowance along hem of vest - 2 cm. Lower and side edges of pocket lining - 2 cm. Side edges of off-set welt and underlay piece - 2 cm.

Note on seam allowances:

- If the pattern has double contour the seam allowances are included. They are 1 cm unless specified otherwise.
- If the pattern has single contour, the seam allowances are NOT included and need to be added when laying out the pattern.

Note on length of fabric:

Attention! The amount of fabric needed for your pattern is not included. It will depend on the selected pattern size, the width, and design of the fabric you plan to use. First, print all the paper patterns and lay them out at the width of fabric you plan to use (usually from 90 to 150 cm). Measure how much fabric you will need. Don't forget to account for pieces that need to be cut multiple times and pieces that are cut on the fold.



CUTTING:

Note on cutting:

On the pattern pieces, "beam" means straight of grain. Lay out your pieces accordingly. Some pieces will be cut on the fold. This is noted on the pattern piece. Mark all notches and other design features such as pleats etc. from the pattern onto your fabric.

When sewing the garment, pay attention to notches, they must match up.

Main fabric:

1. Center back - cut 2
2. Side back - cut 2
3. Side front - cut 2
4. Center front - cut 2
5. Center front facing - cut 2
6. Back neck facing - cut 1
7. Pocket welt - cut 2

8. Underlay piece - cut 2
9. Smaller belt - cut 1
10. Larger belt - cut 1

Lining:

1. Center back - cut 2
2. Center front - cut 2
3. Side back - cut 2
4. Side front - cut 2
5. Bigger pocket bag - cut 2
6. Smaller pocket bag - cut 2

Fusible interfacing:

1. Center front - cut 2
2. Back neck facing - cut 1
3. Center front facing - cut 2
4. Pocket welt - cut 2
5. Smaller belt - cut 1
6. Larger belt - cut 1

Attention: Front and back from lining are cut using the pattern blocks for self fabric, with the exception for the areas of center front facing and back neckline facing.

INSTRUCTIONS:

1. Apply fusible interfacing.
2. Sew side backs to center back, press the seam apart. Sew center back seam, press the seam apart.
3. Sew side fronts to front, press the seam apart.
4. Press welt in half lengthwise wrong sides together. Topstitch small pocket bag onto inner side of welt. Sew welt to front along lower marked line of pocket. Topstitch underlay piece onto bigger pocket bag, folding long edge under. Sew large pocket bag to front along upper marked line of pocket. Stop stitching near short marking lines of the pocket. Slash through pocket opening. Snip diagonally toward end of stitching at 1-1.5 cm from end of pocket opening. Turn welt and large pocket bag onto wrong side through the resulting opening. Sew a double back stitch lines near corners to fix ends of pockets. Sew together edges of pocket bags.
5. Fold smaller belt in half along the marked line right sides together and sew upper and lower edges. Trim seam allowances in corners, belt turn right side out. Thread in one side of buckle and fix with a stitching line. Repeat for larger belt. Adjust the length of belt with the buckle closed. Fix belts to center front edge and side edge correspondingly.

6. Sew the shoulder edges and the side edges, press the seam apart of jacket.
7. Sew and press apart the shoulder edges of the back neckline facing and of the center front facing. Sew seams on lining leaving an opening in left side seam. Sew lining to inner edges of the center front facings and to the facing.
8. Pin together button stands (center front facings) to front and front facing, right sides together, and sew along center front, neckline and lower corner, stop stitching in 1.5 cm away from the button stand (center front facing) edge. Trim away corners, clip into curves. Fold the center front facings onto right side, straighten seams, press. Sew armhole in two steps: first sew the front armhole, then sew the back armhole. Sew lining to lower edge of garment. Turn the vest right side out through the opening. Sew the opening closed.
9. Make buttonhole on the left front. Sew on inner button.

TECHNICAL DRAWING:

