

## Dress - Sewing Pattern #4817

Recommendations on fabric: natural/mixed fabric suitable for dresses; contrasting fabric for decoration.

You will also need: dress zipper, fusible interfacing, 4 buttons.

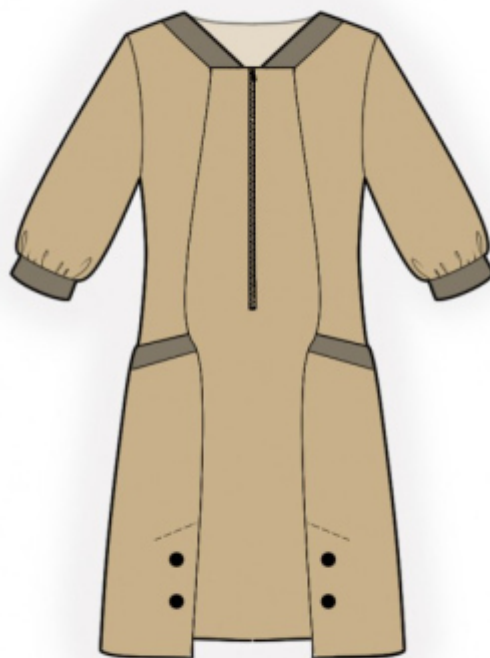
Seam allowances: all seams 1 cm; seam allowance for hem of dress - 3.0 cm.

### Note on seam allowances:

- If the pattern has double contour the seam allowances are included. They are 1 cm unless specified otherwise.
- If the pattern has single contour, the seam allowances are NOT included and need to be added when laying out the pattern.

### Note on length of fabric:

*Attention! The amount of fabric needed for your pattern is not included. It will depend on the selected pattern size, the width, and design of the fabric you plan to use. First, print all the paper patterns and lay them out at the width of fabric you plan to use (usually from 90 to 150 cm). Measure how much fabric you will need. Don't forget to account for pieces that need to be cut multiple times and pieces that are cut on the fold.*



## CUTTING:

### Note on cutting:

*On the pattern pieces, "beam" means straight of grain. Lay out your pieces accordingly. Some pieces will be cut on the fold. This is noted on the pattern piece. Mark all notches and other design features such as pleats etc. from the pattern onto your fabric.*

*When sewing the garment, pay attention to notches, they must match up.*

Main fabric:

1. Back - cut 1 on fold
2. Center front - cut 1 on fold
3. Side upper front - cut 2
4. Side lower front - cut 2
5. Sleeve - cut 2
6. Back neck facing - cut 1
7. Front neck facing - cut 2

8. Large pocket bag - cut 2
9. Small pocket bag - cut 2

Decorative fabric:

1. Neckline trimming - cut 2
2. Pocket welt - cut 2
3. Cuff - cut 2

Fusible interfacing:

1. Neckline trimming - cut 2
2. Pocket welt - cut 2
3. Cuff - cut 2
4. Back neck facing - cut 1
5. Front neck facing - cut 2

## INSTRUCTIONS:

1. Apply fusible interfacing.
2. Mark the position of zipper on center front, apply fusible interfacing. Slash front in between the vertical lines, make slanted cuts at 1-1.5 cm from the end of the slit. Press seam allowances onto wrong side. Place zipper under the edges so that you can see the teeth, and sew.
3. Fold welt in half wrong sides together and press. Pin pocket bag onto side lower front right sides together, place welt in between them, and sew. Serge the seam allowances. Turn pocket bag onto wrong side, press.
4. Sew pocket bag to side upper front, press towards pocket bag, serge. Pin lower side front onto upper side front, adjust edges. Sew lower edge of pocket bags, serge.
5. Apply fusible interfacing to vent area from the wrong side on both front pieces. Serge seam allowance for center front hem, press onto wrong side and slipstitch. Mark the vent fold line from the right side. Press side piece to the wrong side at the vent fold line. On the center piece, press only the seam allowance along the vent to the wrong side.. Press princess edges separately on each front piece. Serge seam allowances of vent. Adjust pattern pieces along princess seam and pin together along upper edge of vent. Sew princess seam up to corner vent. Press towards center, press seam allowances of the vent and sew them together by machine.
6. Serge outer edge of front neckline facing. Press front decoration in half lengthwise wrong sides together. Put front neckline facing onto front, right sides together, place neckline decoration between them, pin together and sew. Trim away corners, fold facing onto wrong side, straighten, press. Slipstitch center edge of facing to zipper tape.
7. Serge lower edge of back neckline facing. Pin back neckline facing onto self garment right sides together and sew neckline exactly up to the marked line of shoulder seam. Clip seam allowances.

8. Sew shoulder seams, placing shoulder edge of front between facing and the shoulder edge of back. Press seams towards back, serge. Turn pieces right side out, press.
9. Sew side seams, press towards the back and serge.
10. Sew, press and serge the sleeve seam. Sew sleeves into armholes matching notches, press seam, serge.

**TECHNICAL DRAWING:**

