

Dress With Scalloped Lace Decoration - Sewing Pattern #4720

Recommendations on fabric: natural/mixed knit fabric of small/medium stretchiness. Knit lace with scallops on both sides, 10-18 cm wide (this parameter is mentioned during the order) .

Seam allowances: seam allowance for hem of garment and hem of sleeve - 1.5 cm; seam allowance along upper edge between the markings, and lower edge of back inset and of front inset - 0 cm; other seams 1.0 cm.

Note on seam allowances:

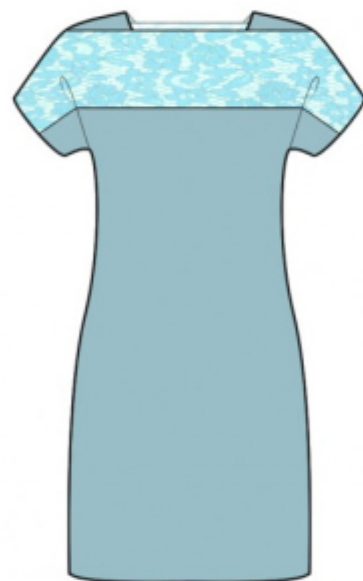
- If the pattern has double contour the seam allowances are included. They are 1 cm unless specified otherwise.
- If the pattern has single contour, the seam allowances are NOT included and need to be added when laying out the pattern.

Note on length of fabric:

Attention! The amount of fabric needed for your pattern is not included. It will depend on the selected pattern size, the width, and design of the fabric you plan to use. First, print all the paper patterns and lay them out at the width of fabric you plan to use (usually from 90 to 150 cm). Measure how much fabric you will need. Don't forget to account for pieces that need to be cut multiple times and pieces that are cut on the fold.

Note on working with stretchy fabric:

Knitted fabric pieces are sewn together with special elastic or narrow zig-zag stitch. Seam allowance on hems can be stitched with twin needles to save stretchiness. Pieces can also be sewn together with a serger. When serging, cut seam allowances to 0.6 - 0.8 cm.



CUTTING:

Note on cutting:

On the pattern pieces, "beam" means straight of grain. Lay out your pieces accordingly. Some pieces will be cut on the fold. This is noted on the pattern piece. Mark all notches and other design features such as pleats etc. from the pattern onto your fabric.

When sewing the garment, pay attention to notches, they must match up.

Main fabric:

1. Back - cut 2

2. Front — cut 1 on fold
3. Shoulder inset - cut 2

Lace:

1. Back inset - cut 1 on fold
2. Front inset — cut 1 on fold

INSTRUCTIONS:

1. Sew the center back seam, press towards left and serge.
2. Serge upper edge of the back. Pin back inset onto back, matching edge of the inset with the marked line of seam on the back and topstitch. Serge upper edge of the front. Pin front inset onto front, matching edge of the inset with the marked line of seam on the front and topstitch.
3. Serge shoulder inset around the contour, press vertical edge (neckline edge) onto wrong side and topstitch.
4. Pin back inset onto shoulder inset, matching the edge of the back with the marked seam line on shoulder inset and topstitch. Pin front inset onto shoulder inset, matching the edge of the front with the marked seam line on shoulder inset and topstitch. Sew upper sleeve seam, press the seam apart and serge.
5. Sew the lower edge of sleeve, sewing the side edge at the same time, press towards the back and serge.
6. Serge the lower edge of garment and the lower edge of sleeve, press onto wrong side and topstitch.

Tip: 1. You may also finish the lower edge of sleeve with a knit bias tape. In this case, please cut away the seam allowance along sleeve hem.

2. You may choose to use knit lace instead of scalloped lace. In this case, please add seam allowance along the edges on back inset and front inset.

TECHNICAL DRAWING:

