

Tunic With Pockets - Sewing Pattern #4477

Recommendations on fabric: Soft knit fabric, medium stretchiness.

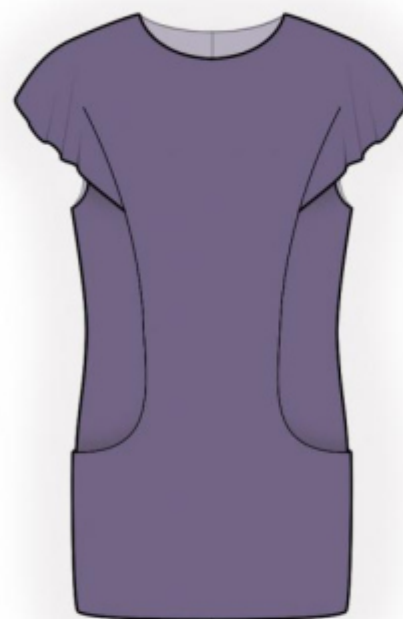
Seam allowances: all seams 1 cm; seam allowance for hem of garment – 2.0 cm, seam allowance for hem of sleeve 1.5 cm.

Note on seam allowances:

- If the pattern has double contour the seam allowances are included. They are 1 cm unless specified otherwise.
- If the pattern has single contour, the seam allowances are NOT included and need to be added when laying out the pattern.

Note on length of fabric:

Attention! The amount of fabric needed for your pattern is not included. It will depend on the selected pattern size, the width, and design of the fabric you plan to use. First, print all the paper patterns and lay them out at the width of fabric you plan to use (usually from 90 to 150 cm). Measure how much fabric you will need. Don't forget to account for pieces that need to be cut multiple times and pieces that are cut on the fold.



CUTTING:

Note on cutting:

On the pattern pieces, "beam" means straight of grain. Lay out your pieces accordingly. Some pieces will be cut on the fold. This is noted on the pattern piece. Mark all notches and other design features such as pleats etc. from the pattern onto your fabric.

When sewing the garment, pay attention to notches, they must match up.

Main fabric:

1. Back - cut 2
2. Side part - cut 2
3. Center front – cut 1 on fold
4. Pocket lining - cut 2

INSTRUCTIONS:

1. Clip seam allowance on front near pocket opening. Pin pocket lining onto front and sew along pocket opening. Fold lining towards wrong side and press. Align pieces and pin lining to front along side and lower edge. Treat as one piece in the future.
2. Sew center back seam. Serge and press apart.
3. Sew left shoulder seam. Serge and press towards back. Cut (or take ready) bias tape, its width should equal 4 cm and length should equal the length of neckline + 6 cm. Fold bias tape in half lengthwise right side out and press. Pin bias tape to neckline from the right side, leaving loose ends, and sew. Fold bias tape onto wrong side, clip into seam allowances and topstitch onto main piece along the seam. Press seam. Sew left shoulder seam. Press seam allowance towards back, serge.
4. Cut (or take ready) bias tape, its width should equal 4 cm and its length should equal the length of armhole of side part + 6 cm. Fold bias tape in half lengthwise right side out and press. Pin bias tape onto armhole edge from the right side, leaving loose ends, and sew. Fold bias tape onto wrong side, clip into seam allowances and topstitch onto main piece along the seam.
5. Trim away depth of back dart leaving 2 cm between lines. Serge, turn inside and topstitch the lower edge of sleeve. Sew side backs to center back: fold back sleeve onto right side, matching sides of dart; match princess seams and sew, gradually moving the stitch line towards the edge after x notch, serge and press. Sew the princess seam on front in the same way, sewing pocket lining to side front in the lower part.
6. Serge the lower edge of garment, press onto wrong side and topstitch.

TECHNICAL DRAWING:

