

Dress With Vertical Princess Seams - Sewing Pattern #2390

Recommendations on fabric: natural/mixed fabric suitable for dresses.

You will also need: fusible interfacing; lining; dress zipper.

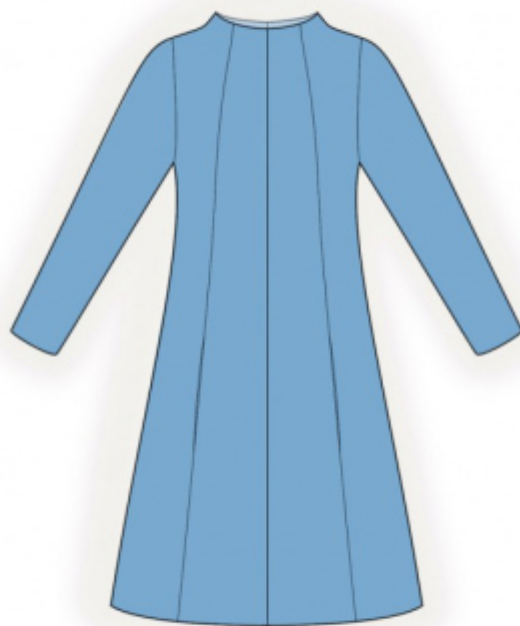
Seam allowances: all seams 1 cm; seam allowance for hem of dress — 1.5 cm.

Note on seam allowances:

- If the pattern has double contour the seam allowances are included. They are 1 cm unless specified otherwise.
- If the pattern has single contour, the seam allowances are NOT included and need to be added when laying out the pattern.

Note on length of fabric:

Attention! The amount of fabric needed for your pattern is not included. It will depend on the selected pattern size, the width, and design of the fabric you plan to use. First, print all the paper patterns and lay them out at the width of fabric you plan to use (usually from 90 to 150 cm). Measure how much fabric you will need. Don't forget to account for pieces that need to be cut multiple times and pieces that are cut on the fold.



CUTTING:

Note on cutting:

On the pattern pieces, "beam" means straight of grain. Lay out your pieces accordingly. Some pieces will be cut on the fold. This is noted on the pattern piece. Mark all notches and other design features such as pleats etc. from the pattern onto your fabric.

When sewing the garment, pay attention to notches, they must match up.

Main fabric:

1. Center back - cut 2
2. Side back - cut 2.
3. Center front - cut 2
4. Side front - cut 2
5. Back neck facing — cut 2
6. Front neck facing — cut 1
7. Sleeve - cut 2

Lining:

1. Pocket bag – cut 4

Fusible interfacing:

1. Back neck facing — cut 2
2. Front neck facing — cut 1

INSTRUCTIONS:

1. Apply fusible interfacing.
2. Sew side backs to center back, press towards center and serge.
3. Serge the center back edges separately. Sew the center back seam from zipper mark to hem, press the seam apart. Sew in zipper.
4. Pin pocket bags onto right side of center front and side front and sew, serge. Sew side front to center front, sewing the pocket bags at the same time, press towards center and serge. Sew center seam on front, press towards left and serge.
5. Sew side and shoulder seams, press towards the back and serge.
6. Sew shoulder seam on front neckline facing and back neckline facing, clip into curves and press apart. Serge the outer edge.
7. Pin facing to garment right sides together and sew the neckline. Clip seam allowances, turn facing onto wrong side, straighten, press. Slipstitch facing to garment along the shoulder seams and to zipper tape.
8. Sew the dart on sleeve cap, cut away the bulk of the dart leaving 0.5-0.7 cm, press towards back and serge. Sew sleeves into armholes matching notches, serge and press.
9. Serge lower edge of garment and lower edge of sleeve, press onto wrong side and topstitch.

TECHNICAL DRAWING:

