

## Dress With Pockets - Sewing Pattern #2371

Recommendations on fabric: natural/mixed knit fabric of small stretchiness.

You will also need: dress zipper.

Seam allowances: all seams 1 cm; seam allowance for hem of dress and hem of sleeve, along the upper edge of pocket – 2.0 cm.

### Note on seam allowances:

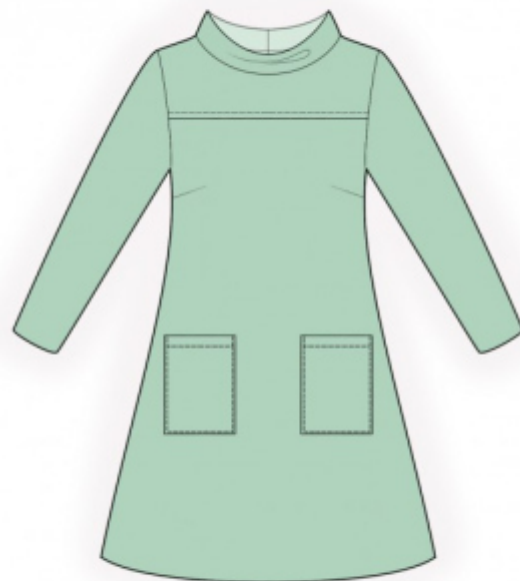
- If the pattern has double contour the seam allowances are included. They are 1 cm unless specified otherwise.
- If the pattern has single contour, the seam allowances are NOT included and need to be added when laying out the pattern.

### Note on length of fabric:

Attention! The amount of fabric needed for your pattern is not included. It will depend on the selected pattern size, the width, and design of the fabric you plan to use. First, print all the paper patterns and lay them out at the width of fabric you plan to use (usually from 90 to 150 cm). Measure how much fabric you will need. Don't forget to account for pieces that need to be cut multiple times and pieces that are cut on the fold.

### Note on working with stretchy fabric:

Knitted fabric pieces are sewn together with special elastic or narrow zig-zag stitch. Seam allowance on hems can be stitched with twin needles to save stretchiness. Pieces can also be sewn together with a serger. When serging, cut seam allowances to 0.6 – 0.8 cm.



## CUTTING:

### Note on cutting:

On the pattern pieces, "beam" means straight of grain. Lay out your pieces accordingly. Some pieces will be cut on the fold. This is noted on the pattern piece. Mark all notches and other design features such as pleats etc. from the pattern onto your fabric.

When sewing the garment, pay attention to notches, they must match up.

Main fabric:

1. Back - cut 2
2. Front - cut 1 on fold

- 3. Sleeve - cut 2
- 4. Pocket - cut 2
- 5. Collar - cut 1
- 6. Yoke - cut 1

## **INSTRUCTIONS:**

1. Sew darts on front. Press bulk of darts towards top.
2. Pin together yoke and front right sides together and sew. Serge and press towards top. Fold yoke towards top, straighten the pleat and topstitch through all layers to front.
3. Serge center back seams separately. Sew the center back seam from zipper mark to hem, press the seam apart. Sew in zipper.
4. Serge pockets around all edges. Press upper seam allowance of pocket onto wrong side and topstitch. Press side and lower seam allowances onto wrong side. Topstitch pockets onto front according to markings.
5. Sew side and shoulder seams, press towards the back and serge.
6. Fold collar in half lengthwise and sew ends. Trim away corners, turn right side out and press. Sew outer collar into neckline, fold under the seam allowance of inner collar and topstitch into seam of. Serge and press.
7. Sew sleeve seam, press towards the back and serge. Sew sleeves into armholes matching notches and adjusting ease, serge and press.
8. Serge seam allowance for hem of garment and hem of sleeve, press onto wrong side and topstitch.

## **TECHNICAL DRAWING:**

