

Dress With Gathers - Sewing Pattern #2316

Recommendations on fabric: natural/mixed fabric suitable for dresses.

You will also need: fusible interfacing, 10 buttons, dress zipper.

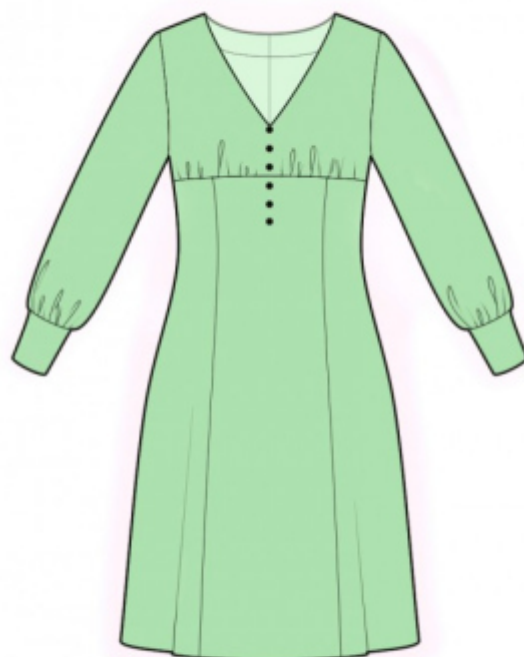
Seam allowances: all seams 1 cm. Seam allowance for hem of garment – 2 cm.

Note on seam allowances:

- If the pattern has double contour the seam allowances are included. They are 1 cm unless specified otherwise.
- If the pattern has single contour, the seam allowances are NOT included and need to be added when laying out the pattern.

Note on length of fabric:

Attention! The amount of fabric needed for your pattern is not included. It will depend on the selected pattern size, the width, and design of the fabric you plan to use. First, print all the paper patterns and lay them out at the width of fabric you plan to use (usually from 90 to 150 cm). Measure how much fabric you will need. Don't forget to account for pieces that need to be cut multiple times and pieces that are cut on the fold.



CUTTING:

Note on cutting:

On the pattern pieces, "beam" means straight of grain. Lay out your pieces accordingly. Some pieces will be cut on the fold. This is noted on the pattern piece. Mark all notches and other design features such as pleats etc. from the pattern onto your fabric.

When sewing the garment, pay attention to notches, they must match up.

Main fabric:

1. Upper back – cut 2
2. Center back – cut 2
3. Side back – cut 2
4. Upper front – cut 1 on fold
5. Center front – cut 1 on fold
6. Side front – cut 2
7. Sleeve – cut 2

- 8. Cuff – cut 2
- 9. Front neck facing – cut 1
- 10. Back neck facing – cut 2

Fusible interfacing:

- 1. Cuff – cut 2
- 2. Front neck facing – cut 1
- 3. Back neck facing – cut 2

INSTRUCTIONS:

- 1. Apply fusible interfacing.
- 2. Sew side backs to center back, press towards center and serge. Sew upper back to lower part, press towards top and serge.
- 3. Serge the center back edges separately. Sew the center back seam from zipper mark to hem, press the seam apart. Sew in zipper.
- 4. Sew side fronts to front, press towards center and serge. Sew a gathering stitch along the lower edge of upper front and gather fullness. Sew upper front to lower front, press towards top and serge.
- 5. Sew side and shoulder seams, press towards the back and serge.
- 6. Sew shoulder seam on front neckline facing and back neckline facing, press the seam apart. Serge the outer edge. Pin facings to garment right sides together and sew the front neckline and the back neckline. Clip into curves, turn facings under, straighten, press. Slipstitch to garment along the shoulder seams.
- 7. Sew a gathering stitch along lower edge of sleeve and gather fullness. Serge the sleeve edges separately. Sew sleeve seam from armhole up to mark for slit, press the seam apart. Topstitch slit at 0.1 cm from fold. Sew sleeves into armholes, serge and press.
- 8. Pin cuffs together, right sides together and sew side and lower edges. Start and stop stitching exactly at the marked line of the cuff seam. Turn the piece right side out, press. Sew the outer part of the cuff to the sleeve, fold inside the inner side of the cuff, and topstitch into the seam of the outer cuff cuffs.
- 9. Serge hem of garment, press onto wrong side and topstitch.
- 10. Make buttonholes and sew on buttons onto cuffs. Sew decorative buttons on front.

TECHNICAL DRAWING:

