

## Dress With Gathers - Sewing Pattern #2273

Recommendations on fabric: natural/mixed fabric suitable for dresses.

You will also need: elastic tape, its width should equal 0.9 – 1.0 cm, dress zipper.

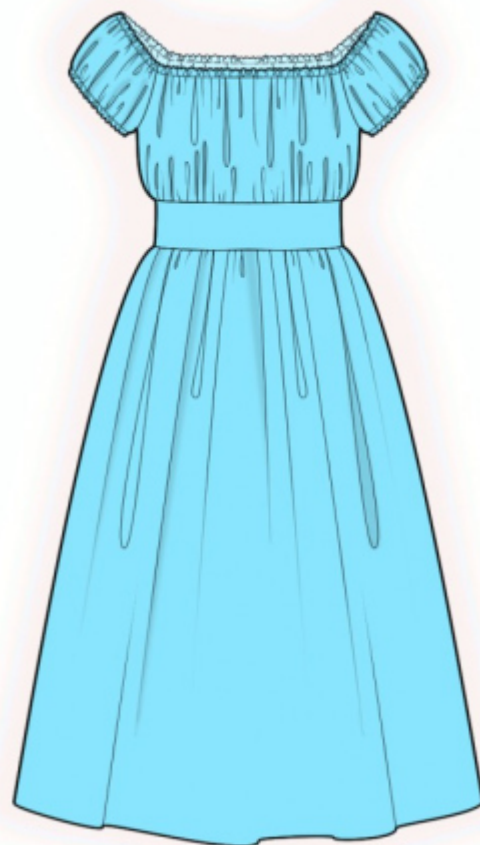
Seam allowances: seam allowance for hem of garment — 2.5 cm, Seam allowance along the upper edge of front, upper edge of back and lower edge of sleeve – 1.5 cm; other seams 1 cm.

### Note on seam allowances:

- If the pattern has double contour the seam allowances are included. They are 1 cm unless specified otherwise.
- If the pattern has single contour, the seam allowances are NOT included and need to be added when laying out the pattern.

### Note on length of fabric:

*Attention! The amount of fabric needed for your pattern is not included. It will depend on the selected pattern size, the width, and design of the fabric you plan to use. First, print all the paper patterns and lay them out at the width of fabric you plan to use (usually from 90 to 150 cm). Measure how much fabric you will need. Don't forget to account for pieces that need to be cut multiple times and pieces that are cut on the fold.*



## CUTTING:

### Note on cutting:

*On the pattern pieces, "beam" means straight of grain. Lay out your pieces accordingly. Some pieces will be cut on the fold. This is noted on the pattern piece. Mark all notches and other design features such as pleats etc. from the pattern onto your fabric.*

*When sewing the garment, pay attention to notches, they must match up.*

Main fabric:

1. Upper back – cut 2
2. Back belt — cut 2
3. Lower back — cut 2
4. Upper front — cut 1 on fold
5. Front belt — cut 1 on fold
6. Lower front — cut 1 on fold

7. Sleeve — cut 2

**INSTRUCTIONS:**

1. Sew a gathering stitch along the lower edge of upper front and gather fullness. Sew front waistband to upper part. Serge and press towards belt. Sew a gathering stitch along the upper edge of lower front and gather fullness. Sew lower part to waistband. Serge and press towards belt.
2. Sew a gathering stitch along the lower edge of the Upper Back and gather fullness. Sew back waistband to upper part. Serge and press towards belt. Sew a gathering stitch along the upper edge of lower back and gather fullness. Sew lower part to waistband. Serge and press towards belt.
3. Serge separately the center edges of backs. Sew center back seam from notch for zipper to bottom. Press apart center seam, pressing the slit for zipper at the same time. Sew in zipper.
4. Sew sleeve to front and to back. Serge the seam allowances and press onto sleeve.
5. Sew side seams, processing the sleeve seam at the same time. Press seams towards back and serge.
6. Serge upper edge of dress. Fold under the seam allowance and topstitch, making a casing. Insert elastic band and slipstitch ends.
7. Serge lower edge of sleeve. Fold under the seam allowance and topstitch, making a casing. Thread in elastic band and slipstitch ends.
8. Serge the lower edge of garment, press onto wrong side and topstitch.

**TECHNICAL DRAWING:**

