

## Waistcoat With Collar - Sewing Pattern #2219

Recommendations on fabric: natural/mixed knit fabric of small stretchiness, footer, fleece.

You will also need: knit fusible interfacing.

Seam allowances: all seams 1 cm; seam allowance for hem of garment - 2.0 cm.

### Note on seam allowances:

- If the pattern has double contour the seam allowances are included. They are 1 cm unless specified otherwise.
- If the pattern has single contour, the seam allowances are NOT included and need to be added when laying out the pattern.

### Note on length of fabric:

Attention! The amount of fabric needed for your pattern is not included. It will depend on the selected pattern size, the width, and design of the fabric you plan to use. First, print all the paper patterns and lay them out at the width of fabric you plan to use (usually from 90 to 150 cm). Measure how much fabric you will need. Don't forget to account for pieces that need to be cut multiple times and pieces that are cut on the fold.

### Note on working with stretchy fabric:

Knitted fabric pieces are sewn together with special elastic or narrow zig-zag stitch. Seam allowance on hems can be stitched with twin needles to save stretchiness. Pieces can also be sewn together with a serger. When serging, cut seam allowances to 0.6 - 0.8 cm.

## CUTTING:

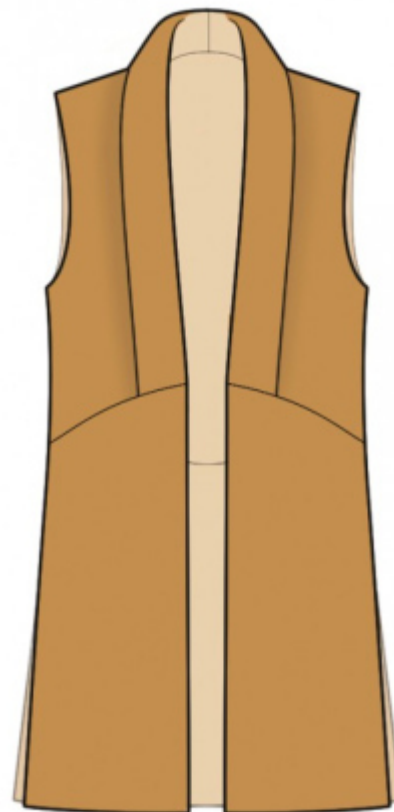
### Note on cutting:

On the pattern pieces, "beam" means straight of grain. Lay out your pieces accordingly. Some pieces will be cut on the fold. This is noted on the pattern piece. Mark all notches and other design features such as pleats etc. from the pattern onto your fabric.

When sewing the garment, pay attention to notches, they must match up.

Main fabric:

1. Upper back - cut 1 on fold
2. Lower back - cut 1 on fold



3. Lower front - cut 2
4. Upper front - cut 2

Fusible interfacing (the pieces are cut using the pattern blocks for self fabric):

1. One-piece center front facing of upper front - cut 2
2. One-piece center front facing of lower front - cut 2

## **INSTRUCTIONS:**

1. Sew upper back to lower back. Serge and press towards bottom.
2. Sew center edge of one-piece collar, press the seam allowances apart.
3. Sew shoulder seams, sewing the collar into the back neckline at the same time. Shoulder edges serge and press towards back.
4. Clip into seam allowance in the corner of one-piece center front facing. Serge outer edge and shoulder edges of center front facing. Fold collar and center front facing onto the wrong side, fold under the seam allowance of collar and stitch-in-the-ditch into the seam of upper part. Sew a fixing stitch along the center front edge along the line marked with an arrow. Press collar. Slipstitch the shoulder edge of the center front facing to the shoulder seam of the garment.
5. Fold the lower part of the collar towards the side seam along the fold line and baste together along lower edge.
6. Sew upper front to lower front, inserting the upper part between the front and the one-piece center front facing of the lower part. Press seam allowances down and serge.
7. Cut (or take ready) bias tape, its width should equal 4 cm and length should equal the length of armhole + 4 cm. Fold bias tape in half lengthwise right side out and press. Pin bias tape onto armhole edge from the right side, leaving loose ends, and sew. Fold bias tape onto wrong side, clip into seam allowances and topstitch onto main piece along the seam. Press seam.
8. Serge separately side edges. Sew side seams from top to the mark for the slit, press the seam apart. Sew a fixing stitch along the slit edge 0.5 cm.
9. Serge bottom edge of garment, press onto wrong side and topstitch.

## **TECHNICAL DRAWING:**

