

Skirt With Princess Seams - Sewing Pattern #2217

Recommendations on fabric: well draping natural/mixed fabrics.

You will also need: fusible interfacing; 1 button; dress zipper.

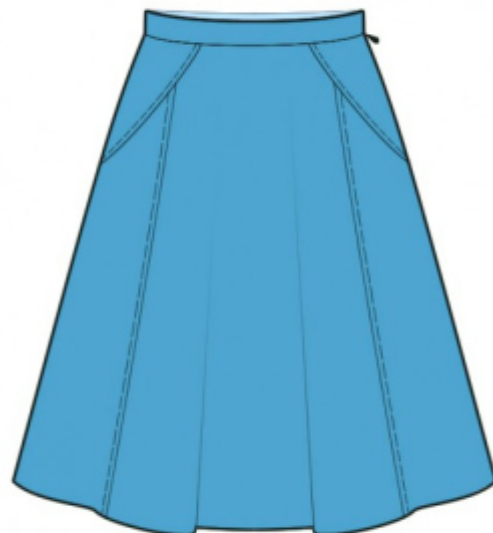
Seam allowances: all seams 1 cm. Seam allowance along hem 2 cm.

Note on seam allowances:

- If the pattern has double contour the seam allowances are included. They are 1 cm unless specified otherwise.
- If the pattern has single contour, the seam allowances are NOT included and need to be added when laying out the pattern.

Note on length of fabric:

Attention! The amount of fabric needed for your pattern is not included. It will depend on the selected pattern size, the width, and design of the fabric you plan to use. First, print all the paper patterns and lay them out at the width of fabric you plan to use (usually from 90 to 150 cm). Measure how much fabric you will need. Don't forget to account for pieces that need to be cut multiple times and pieces that are cut on the fold.



CUTTING:

Note on cutting:

On the pattern pieces, "beam" means straight of grain. Lay out your pieces accordingly. Some pieces will be cut on the fold. This is noted on the pattern piece. Mark all notches and other design features such as pleats etc. from the pattern onto your fabric.

When sewing the garment, pay attention to notches, they must match up.

Main fabric:

1. Upper center back skirt - cut 1 on fold
2. Lower center back skirt - cut 1 on fold
3. Upper side back skirt - cut 2
4. Lower side back skirt - cut 2
5. Center front skirt - cut 1 on fold
6. Lower side front skirt - cut 2
7. Upper side front skirt - cut 2

8. Belt – cut 1

Fusible interfacing:

1. Belt – cut 1

INSTRUCTIONS:

1. Apply fusible interfacing to belt.
2. Sew lower side part to lower center back skirt. Serge seam and press towards center. Sew a decorative stitch at 0.5 cm from seam.
3. Sew upper side back skirt to the skirt. Serge and press towards top. Sew a decorative stitch at 0.5 cm from seam. Sew center upper back skirt to back. Serge and press towards side. Sew a decorative stitch at 0.5 cm from seam.
4. Sew lower front skirt to side front skirt, serge seams and press towards center. Sew a decorative stitch at 0.5 cm from seam. Sew side upper front skirt, serge and press towards top. Sew a decorative stitch at 0.5 cm from seam.
5. Serge separately left side edges. Sew the seam from zipper mark down to hem. Press the seam apart. Sew in zipper.
6. Sew and serge right side edges, press towards the back.
7. Sew outer side of belt to upper edge of skirt. Sew ends of belt, trim corners and turn right side out. Turn inner edge of the belt under and topstitch into seam of. Press the belt.
8. Mark and make a buttonhole. Sew on a button.
9. Serge hem of skirt, press onto wrong side and topstitch.

TECHNICAL DRAWING:

