

## Dress With Chiffon Sleeves - Sewing Pattern #2214

Recommendations on fabric: natural/mixed fabric suitable for dresses. Chiffon in matching color.

You will also need: fusible interfacing; dress zipper, 2 buttons.

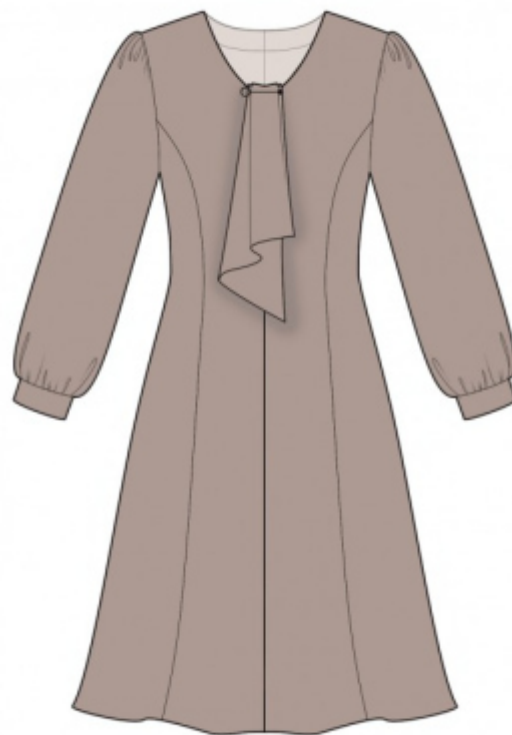
Seam allowances: Seam allowance along hem of garment – 2.0 cm.  
Other seams – 1.0 cm

### Note on seam allowances:

- If the pattern has double contour the seam allowances are included. They are 1 cm unless specified otherwise.
- If the pattern has single contour, the seam allowances are NOT included and need to be added when laying out the pattern.

### Note on length of fabric:

*Attention! The amount of fabric needed for your pattern is not included. It will depend on the selected pattern size, the width, and design of the fabric you plan to use. First, print all the paper patterns and lay them out at the width of fabric you plan to use (usually from 90 to 150 cm). Measure how much fabric you will need. Don't forget to account for pieces that need to be cut multiple times and pieces that are cut on the fold.*



## CUTTING:

### Note on cutting:

*On the pattern pieces, "beam" means straight of grain. Lay out your pieces accordingly. Some pieces will be cut on the fold. This is noted on the pattern piece. Mark all notches and other design features such as pleats etc. from the pattern onto your fabric.*

*When sewing the garment, pay attention to notches, they must match up.*

Main fabric:

1. Center back - cut 2
2. Side back - cut 2
3. Center front - cut 2
4. Side front - cut 2
5. Back neck facing - cut 2
6. Front neck facing - cut 1
7. Cuff - cut 2

Chiffon:

1. Sleeve – cut 2
2. Tie – cut 1

Fusible interfacing:

1. Back neck facing - cut 2
2. Front neck facing - cut 1

## INSTRUCTIONS:

1. Apply fusible interfacing.
2. Sew side backs to center back, press towards center and serge. Sew side fronts to front, press towards center and serge.
3. Serge the center back edges separately. Sew the center back seam from zipper mark to hem, press the seam apart. Sew in zipper.
4. Sew center seam on front, press towards left and serge.
5. Sew side and shoulder seams, press towards the back and serge.
6. Serge tie along three edges, press seam allowances onto wrong side and topstitch. You may also finish the edges with thin rolled hem. Fold piece in half lengthwise, make a pleat as desired and topstitch onto the neckline edge between the markers.
7. Sew the shoulder seams of the neckline facings, press the seam apart. Serge the outer edge. Pin facings to garment right sides together and sew the neckline. Clip into curves, turn pieces right side out. Slipstitch facing to garment along the shoulder edges, center front seam and zipper tape.
8. Cut slit on sleeve along the marked line. Cut bias tape from main fabric (or take ready), its width should equal 4 cm and length should equal two lengths of slit +4 cm. Fold bias tape in half lengthwise and press. Press outer seam allowances towards center. Sew bias tape to slit of sleeve (pin bias tape to slit edge from the right side and sew, fold bias tape onto wrong side and topstitch onto garment along fold line).
9. Sew sleeve seam, press towards the back and serge. Sew a gathering stitch along the upper edge of the sleeve cap and gather fullness. Sew sleeves into armholes, matching notches. Serge and press.
10. Fold cuff in half lengthwise, right sides together and sew short sides. Start stitching exactly at the line which marks the seam between cuff and sleeve. Trim away corners, turn cuff right side out, straighten, press. Sew a gathering stitch along lower edge of sleeve and gather fullness. Sew outer side of cuff to lower edge of sleeve. Fold inside inner side of cuff inside and topstitch into seam of.

11. Serge the lower edge of garment, press onto wrong side and finish with hidden stitches.
12. Make button holes on cuffs, sew on buttons.

**TECHNICAL DRAWING:**

