

Dress With Raglan Sleeves - Sewing Pattern #2212

Recommendations on fabric: natural/mixed knit fabric of small stretchiness.

You will also need: knit fusible interfacing; 1 dress zipper.

Seam allowances: all seams 1 cm. Seam allowance for hem of garment and hem of sleeve - 2 cm.

Note on seam allowances:

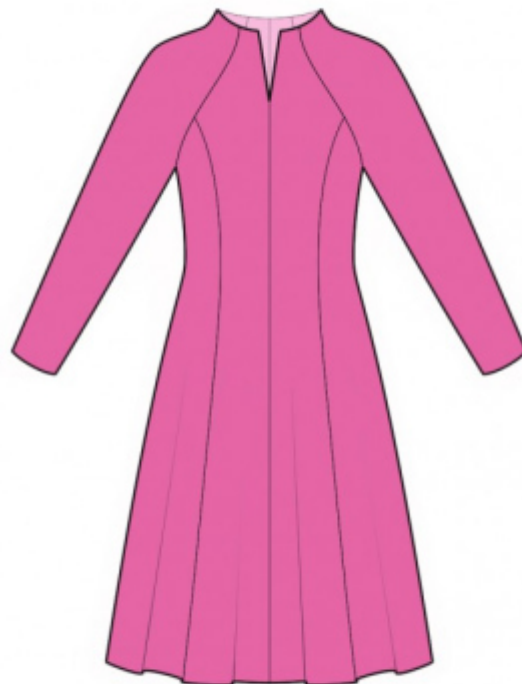
- If the pattern has double contour the seam allowances are included. They are 1 cm unless specified otherwise.
- If the pattern has single contour, the seam allowances are NOT included and need to be added when laying out the pattern.

Note on length of fabric:

Attention! The amount of fabric needed for your pattern is not included. It will depend on the selected pattern size, the width, and design of the fabric you plan to use. First, print all the paper patterns and lay them out at the width of fabric you plan to use (usually from 90 to 150 cm). Measure how much fabric you will need. Don't forget to account for pieces that need to be cut multiple times and pieces that are cut on the fold.

Note on working with stretchy fabric:

Knitted fabric pieces are sewn together with special elastic or narrow zig-zag stitch. Seam allowance on hems can be stitched with twin needles to save stretchiness. Pieces can also be sewn together with a serger. When serging, cut seam allowances to 0.6 – 0.8 cm.



CUTTING:

Note on cutting:

On the pattern pieces, "beam" means straight of grain. Lay out your pieces accordingly. Some pieces will be cut on the fold. This is noted on the pattern piece. Mark all notches and other design features such as pleats etc. from the pattern onto your fabric.

When sewing the garment, pay attention to notches, they must match up.

Main fabric:

1. Center back – cut 2
2. Side back – cut 2

3. Side front – cut 2
4. Center front – cut 2
5. Back sleeve – cut 2
6. Front sleeve – cut 2
7. Back neck facing – cut 2
8. Front neck facing – cut 2

Fusible interfacing:

1. Back neck facing – cut 2
2. Front neck facing – cut 2

INSTRUCTIONS:

1. Apply interfacing to facings.
2. Sew side backs to center back, press seam allowances towards center and serge. Sew side fronts to front, press seam allowances towards center and serge.
3. Serge the center back edges separately. Sew the center back seam from notch for zipper to bottom. Press Apart seam allowances, pressing the slit for closure at the same time. Sew in zipper.
4. Sew center seam on front from notch to bottom, press the seam apart, serge.
5. Sew back sleeves to back, press seam allowances towards sleeve and serge. Sew front sleeves to front, press seam allowances towards sleeve and serge.
6. Sew upper edges of sleeves, press towards the back and serge. Sew lower edges of sleeves and side edges continuously, press towards the back and serge.
7. Sew shoulder seams and front center seam from notch to bottom of facings, press the seam apart. Serge lower edge. Pin facing to garment right sides together and sew the neckline and front slit, clip into curves, trim away corners. Fold the facing onto the wrong side, straighten, press. Slipstitch facing to zipper tape and to shoulder seams.
8. Seam allowance along hem of garment and hem of sleeve serge, press onto wrong side and topstitch.

TECHNICAL DRAWING:

