

## Sundress With Pocket - Sewing Pattern #2211

Recommendations on fabric: natural/mixed fabric suitable for dresses.

You will also need: fusible interfacing; dress zipper.

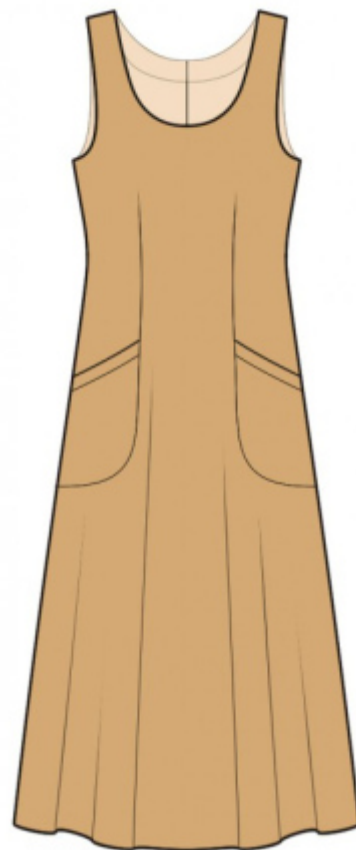
Seam allowances: seam allowance for hem of garment — 2.0 cm, other seams 1 cm.

### Note on seam allowances:

- If the pattern has double contour the seam allowances are included. They are 1 cm unless specified otherwise.
- If the pattern has single contour, the seam allowances are NOT included and need to be added when laying out the pattern.

### Note on length of fabric:

*Attention! The amount of fabric needed for your pattern is not included. It will depend on the selected pattern size, the width, and design of the fabric you plan to use. First, print all the paper patterns and lay them out at the width of fabric you plan to use (usually from 90 to 150 cm). Measure how much fabric you will need. Don't forget to account for pieces that need to be cut multiple times and pieces that are cut on the fold.*



## CUTTING:

### Note on cutting:

*On the pattern pieces, "beam" means straight of grain. Lay out your pieces accordingly. Some pieces will be cut on the fold. This is noted on the pattern piece. Mark all notches and other design features such as pleats etc. from the pattern onto your fabric.*

*When sewing the garment, pay attention to notches, they must match up.*

Main fabric:

1. Back - cut 2
2. Front — cut 1 on fold
3. Pocket - cut 2
4. Pocket placket — cut 2
5. Back neck facing - cut 2
6. Front neck facing - cut 1

Fusible interfacing:

1. Back neck facing – cut 2
2. Front neck facing – cut 1
3. Pocket placket – cut 2

## **INSTRUCTIONS:**

1. Apply fusible interfacing.
2. Sew darts on back, press bulk towards center. Serge center back edges separately. Sew the center back seam from zipper mark to hem, press the seam apart. Sew in zipper.
3. Fold pocket placket in half lengthwise right side out and press. Sew pocket placket to the upper edge of placket. Serge and press towards pocket. Pin ready pocket onto the one-piece front side and taste together along the princess edge and side edge. Sew side front to front. Serge the seam allowances, clip into curves and press towards the center.
4. Sew side and shoulder seams. Serge seams and press towards back.
5. Sew shoulder seams of facings. Press the seam apart. Serge the outer edge. Pin facing onto right side of dress and sew neckline. Clip seam allowances, fold facing onto wrong side and press. Slipstitch facing to shoulder seams and to zipper tape.
6. Cut or use ready-made bias tape, its width should equal 4 cm and length should equal the length of armhole + 6 cm. Fold bias tape in half lengthwise right side out and press. Pin bias tape to armhole edge from the right side and sew. Fold bias tape onto wrong side, clip into seam allowances and topstitch onto main piece along the seam. Press seam.
7. Serge the lower edge of garment, press onto wrong side and topstitch.

## **TECHNICAL DRAWING:**

