

Dress With Zipper - Sewing Pattern #2210

Recommendations on fabric: natural/mixed fabric suitable for dresses.

You will also need: fusible interfacing; separating zipper.

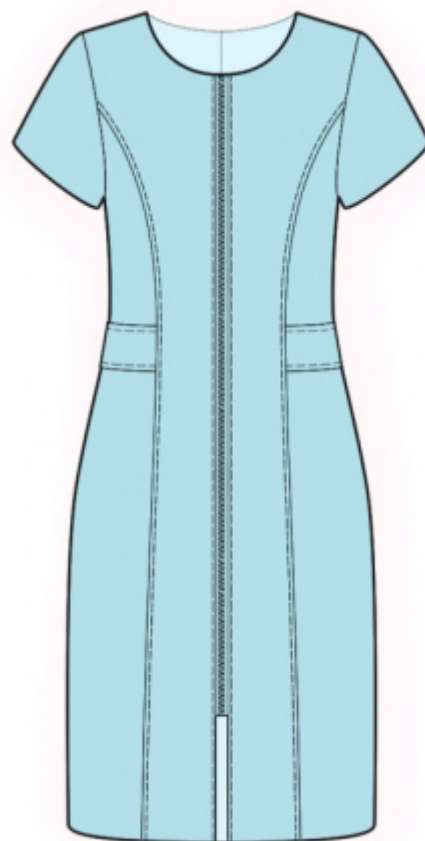
Seam allowances: Seam allowance along hem of garment and hem of sleeve - 2.0 cm. Other seams - 1.0 cm

Note on seam allowances:

- If the pattern has double contour the seam allowances are included. They are 1 cm unless specified otherwise.
- If the pattern has single contour, the seam allowances are NOT included and need to be added when laying out the pattern.

Note on length of fabric:

Attention! The amount of fabric needed for your pattern is not included. It will depend on the selected pattern size, the width, and design of the fabric you plan to use. First, print all the paper patterns and lay them out at the width of fabric you plan to use (usually from 90 to 150 cm). Measure how much fabric you will need. Don't forget to account for pieces that need to be cut multiple times and pieces that are cut on the fold.



CUTTING:

Note on cutting:

On the pattern pieces, "beam" means straight of grain. Lay out your pieces accordingly. Some pieces will be cut on the fold. This is noted on the pattern piece. Mark all notches and other design features such as pleats etc. from the pattern onto your fabric.

When sewing the garment, pay attention to notches, they must match up.

Main fabric:

1. Center back - cut 2
2. Side back - cut 2
3. Center front - cut 2
4. Side front - cut 2
5. Sleeve - cut 2
6. Center front facing - cut 2
7. Back neck facing - cut 1

8. Belt – cut 2

Fusible interfacing:

1. Center front facing - cut 2
2. Back neck facing - cut 1

INSTRUCTIONS:

1. Apply fusible interfacing.
2. Fold belt in half lengthwise right sides together and sew along long side. Turn belt right side out, straighten, press. Sew a decorative stitchline at 0.5 – 0.7 cm along the longer edges.
3. Sew side seams, press towards the back and serge. Pin belt onto the piece and baste together along princess seams.
4. Sew the center back seam, press towards left and serge. Sew side backs to center back, press towards center and serge.
5. Pin fronts together, right sides together and adjust edges, measuring the lengths of center front edges. Sew zipper to the center front edge.
6. Sew side fronts to front, press towards center and serge.
7. Sew shoulder seams, press towards the back and serge.
8. Sew shoulder edges of center front facings and back neckline facing, press the seam apart. Serge the outer edge. Pin center front facings onto garment right sides together and sew center front edge, neckline edge and the lower corner of the front piece. Clip into curves, trim away corners, turn pieces right side out.
9. Sew sleeve edges, press towards the back and serge. Sew sleeves into armholes matching notches, serge and press.
10. Serge the seam allowance along the hem of garment and hem of sleeve, press onto wrong side and topstitch.

TECHNICAL DRAWING:

