

## Dress With Box Pleat - Sewing Pattern #2208

Recommendations on fabric: natural/mixed fabric suitable for dresses.

You will also need: dress zipper; fusible interfacing.

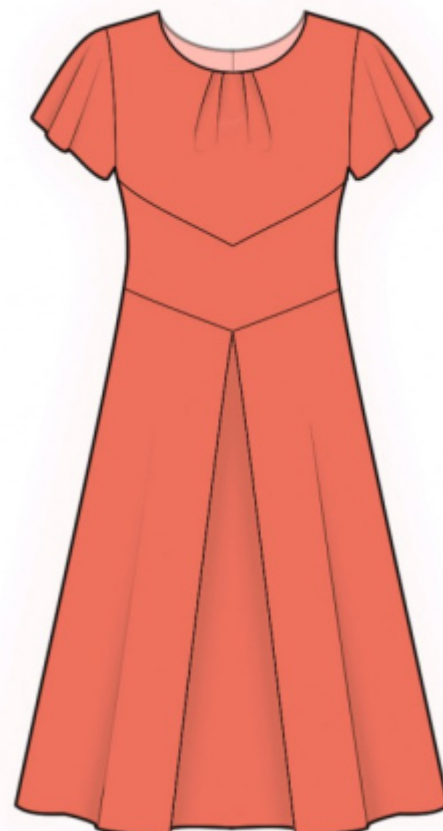
Seam allowances: all seams 1 cm; seam allowance for hem of dress – 2.0 cm; seam allowance for hem of sleeve – 1.5 cm.

### Note on seam allowances:

- If the pattern has double contour the seam allowances are included. They are 1 cm unless specified otherwise.
- If the pattern has single contour, the seam allowances are NOT included and need to be added when laying out the pattern.

### Note on length of fabric:

*Attention! The amount of fabric needed for your pattern is not included. It will depend on the selected pattern size, the width, and design of the fabric you plan to use. First, print all the paper patterns and lay them out at the width of fabric you plan to use (usually from 90 to 150 cm). Measure how much fabric you will need. Don't forget to account for pieces that need to be cut multiple times and pieces that are cut on the fold.*



## CUTTING:

### Note on cutting:

*On the pattern pieces, "beam" means straight of grain. Lay out your pieces accordingly. Some pieces will be cut on the fold. This is noted on the pattern piece. Mark all notches and other design features such as pleats etc. from the pattern onto your fabric.*

*When sewing the garment, pay attention to notches, they must match up.*

Main fabric:

1. Center back - cut 2
2. Side back - cut 2
3. Upper front - cut 1 on fold
4. Middle front - cut 1 on fold
5. Back skirt - cut 2
6. Front skirt - cut 1 on fold
7. Sleeve - cut 2

- 8. Back neck facing – cut 2
- 9. Front neck facing – cut 1

Fusible interfacing:

- 1. Back neck facing – cut 2
- 2. Front neck facing – cut 1

## **INSTRUCTIONS:**

- 1. Apply fusible interfacing.
- 2. Sew Center Backs to Side Backs, press towards center and serge. Sew back skirt to upper back, press towards top and serge.
- 3. Serge the center back edges separately. Sew the center back seam from zipper mark to hem, press the seam apart. Sew in zipper.
- 4. Make and baste pleats on upper front (fold bulks from center). Sew middle front to upper front, press towards top and serge.
- 5. Make and baste box pleats on front skirt. Sew skirt to middle part, press towards top and serge.
- 6. Sew side and shoulder seams, press towards the back and serge.
- 7. Sew the shoulder seams of the neckline facings, press the seam apart. Serge the outer edge. Pin facing onto dress, right side down and sew the neckline. Clip seam allowances, fold facing onto wrong side and press. Slipstitch facing to zipper tape.
- 8. Sew sleeve seam, press towards back and serge. Sew sleeves into armholes matching notches, press seam, serge.
- 9. Serge hem of dress and hem of sleeve, press onto wrong side and topstitch.

## **TECHNICAL DRAWING:**

