

Dress With Decorative Princess Seams - Sewing Pattern #2195

Recommendations on fabric: natural/mixed fabric suitable for dresses.

You will also need: fusible interfacing; dress zipper.

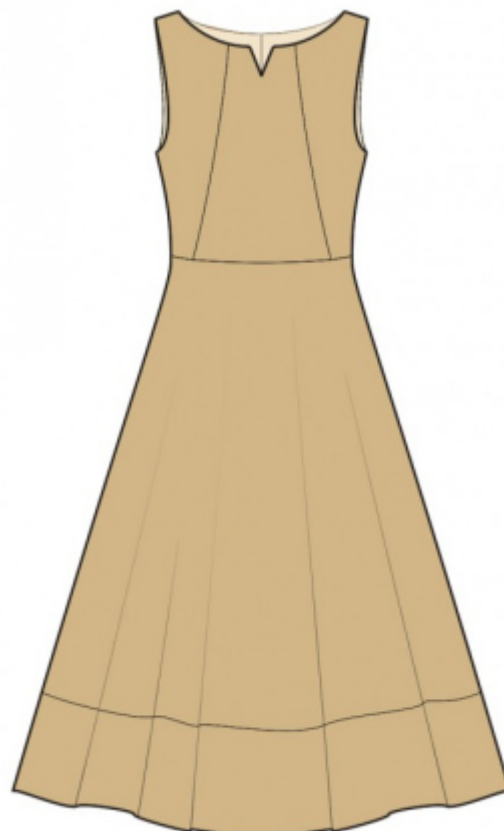
Seam allowances: all seams 1 cm. Seam allowance for hem of garment – 2 cm.

Note on seam allowances:

- If the pattern has double contour the seam allowances are included. They are 1 cm unless specified otherwise.
- If the pattern has single contour, the seam allowances are NOT included and need to be added when laying out the pattern.

Note on length of fabric:

Attention! The amount of fabric needed for your pattern is not included. It will depend on the selected pattern size, the width, and design of the fabric you plan to use. First, print all the paper patterns and lay them out at the width of fabric you plan to use (usually from 90 to 150 cm). Measure how much fabric you will need. Don't forget to account for pieces that need to be cut multiple times and pieces that are cut on the fold.



CUTTING:

Note on cutting:

On the pattern pieces, "beam" means straight of grain. Lay out your pieces accordingly. Some pieces will be cut on the fold. This is noted on the pattern piece. Mark all notches and other design features such as pleats etc. from the pattern onto your fabric.

When sewing the garment, pay attention to notches, they must match up.

Main fabric:

1. Upper back – cut 2
2. Lower back – cut 2
3. Lower back placket – cut 2
4. Lower front placket – cut 1 on fold
5. Upper center front – cut 1 on fold
6. Upper side front – cut 2
7. Lower front – cut 1 on fold

- 8. Back neck facing – cut 2
- 9. Front neck facing – cut 1

Fusible interfacing:

- 1. Back neck facing — cut 2
- 2. Front neck facing – cut 1

INSTRUCTIONS:

- 1. Apply fusible interfacing.
- 2. Sew darts on upper back, press bulk towards center. Sew upper back to lower back. Serge seams and press towards top. Sew lower placket to back. Serge and press towards top. Serge the center back edges separately. Sew center back seam from notch for zipper to bottom. Press the seam apart. Sew in zipper.
- 3. Sew side fronts to front, serge seams and press towards center. Sew upper front to lower front. Serge seams and press towards top. Sew lower placket to front. Serge and press towards top.
- 4. Sew shoulder seams of dress, serge and press apart.
- 5. Sew the shoulder seams of the neckline facings, press the seam apart. Serge the outer edge. Pin facing onto garment right sides together and sew neckline. Clip seam allowances, trim away corner. Fold the facing onto the wrong side, straighten, press. Slip stitch shoulder seams of garment to shoulder seams of facing.
- 6. Cut (or take ready) bias tape, its width should equal 4 cm and length should equal the length of armhole + 6 cm. Fold bias tape in half lengthwise right side out and press. Pin bias tape onto armhole edge from the right side, leaving loose ends, and sew. Fold bias tape onto wrong side, clip into seam allowances and topstitch onto main piece along the seam. Press seam.
- 7. Sew side seams. Serge seams and press towards back.
- 8. Serge the lower edge of garment. Fold seam allowances onto wrong side and topstitch.

TECHNICAL DRAWING:

