

## Dress With Decorative Collar - Sewing Pattern #2167

Recommendations on fabric: natural/mixed fabric suitable for dresses.

You will also need: dress zipper; fusible interfacing.

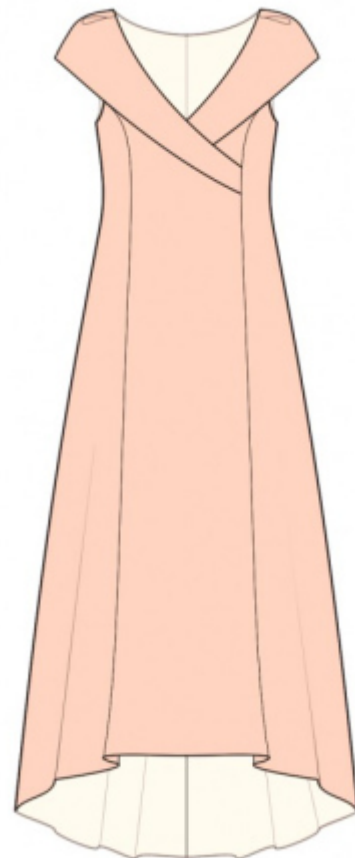
Seam allowances: all seams 1 cm; seam allowance for hem of dress - 1.2 cm.

### Note on seam allowances:

- If the pattern has double contour the seam allowances are included. They are 1 cm unless specified otherwise.
- If the pattern has single contour, the seam allowances are NOT included and need to be added when laying out the pattern.

### Note on length of fabric:

Attention! The amount of fabric needed for your pattern is not included. It will depend on the selected pattern size, the width, and design of the fabric you plan to use. First, print all the paper patterns and lay them out at the width of fabric you plan to use (usually from 90 to 150 cm). Measure how much fabric you will need. Don't forget to account for pieces that need to be cut multiple times and pieces that are cut on the fold.



## CUTTING:

### Note on cutting:

On the pattern pieces, "beam" means straight of grain. Lay out your pieces accordingly. Some pieces will be cut on the fold. This is noted on the pattern piece. Mark all notches and other design features such as pleats etc. from the pattern onto your fabric.

When sewing the garment, pay attention to notches, they must match up.

Main fabric:

1. Center back - cut 2
2. Side back - cut 2
3. Center front - cut 1
4. Side front - cut 2
5. Upper center front - cut 1
6. Right collar - cut 2
7. Left collar - cut 2

Fusible interfacing:

1. Right collar – cut 1
2. Left collar – cut 1

## **INSTRUCTIONS:**

1. Apply fusible interfacing to the collars.
2. Sew side backs to center back. Serge seams and press towards center.
3. Serge center back edges separately on each piece. Sew the center back seam from notch to bottom, press the seam apart. Sew in zipper.
4. Sew right side front to center front. Serge seam and press towards center.
5. Sew side and shoulder seams. Serge seams and press towards back.
6. Pin collars together by two, right sides together, and sew along the collar fall and the centre edge. Trim away corners, clip into curves. Turn the collars onto right side and press. Make and baste pleats. The bulk is directed towards the shoulder edge.
7. Pin the left collar onto the wrong side of the dress and sew it into the neckline. Serge. Fold collar onto right side. Slip stitch the lower edge of the collar to upper centre front.
8. Pin the right collar onto the wrong side of the dress and sew it into the neckline, inserting the left part. Serge. Fold collar onto right side. Slip stitch the co edge of the collar to the right princess seam.
9. Sew left side front to center front. Serge seam and press towards center.
10. Cut (or take ready) bias tape, its width should equal 4 cm and length should equal the length of armhole + 4 cm. Fold bias tape in half lengthwise right side out and press. Pin bias tape onto armhole edge from the right side, leaving loose ends, and sew. Fold bias tape onto wrong side, clip into seam allowances and topstitch onto main piece along the seam. Press seam.
11. Serge bottom edge of dress, press onto wrong side and topstitch.

## **TECHNICAL DRAWING:**

