

## Jeans Dress - Sewing Pattern #2151

Recommendations on fabric: thin natural/mixed jeans fabrics.

You will also need: fusible interfacing; 5 buttons; dress zipper.

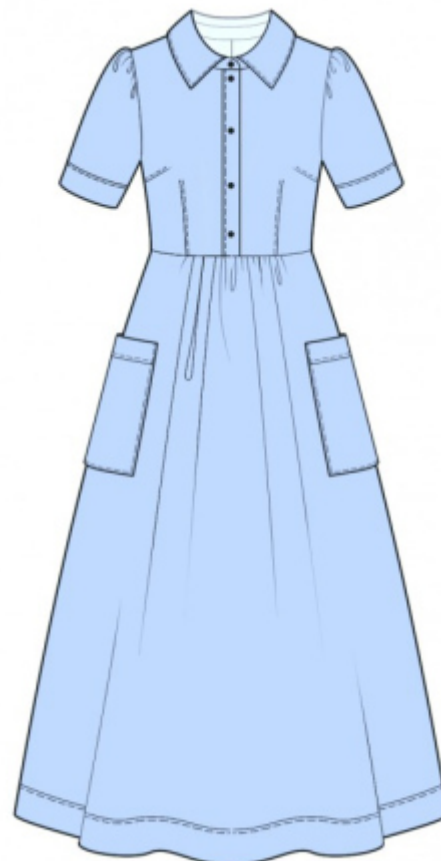
Seam allowances: all seam allowances – 1.0 cm

### Note on seam allowances:

- If the pattern has double contour the seam allowances are included. They are 1 cm unless specified otherwise.
- If the pattern has single contour, the seam allowances are NOT included and need to be added when laying out the pattern.

### Note on length of fabric:

Attention! The amount of fabric needed for your pattern is not included. It will depend on the selected pattern size, the width, and design of the fabric you plan to use. First, print all the paper patterns and lay them out at the width of fabric you plan to use (usually from 90 to 150 cm). Measure how much fabric you will need. Don't forget to account for pieces that need to be cut multiple times and pieces that are cut on the fold.



## CUTTING:

### Note on cutting:

On the pattern pieces, "beam" means straight of grain. Lay out your pieces accordingly. Some pieces will be cut on the fold. This is noted on the pattern piece. Mark all notches and other design features such as pleats etc. from the pattern onto your fabric.

When sewing the garment, pay attention to notches, they must match up.

Main fabric:

1. Upper back – cut 2
2. Lower back – cut 2
3. Upper front – cut 2
4. Lower front – cut 1 on fold
5. Front placket – cut 2
6. Sleeve – cut 2
7. Cuff – cut 2

8. Lower placket - cut 1 on fold
9. Collar - cut 2
10. Stand collar - cut 2
11. Pocket - cut 2
12. Upper part of the pocket - cut 2

Fusible interfacing:

1. Collar - cut 1
2. Front placket - cut 2
3. Cuff - cut 2
4. Stand collar - cut 2
5. Upper part of the pocket - cut 2

## INSTRUCTIONS:

1. Apply fusible interfacing.
2. Sew darts on fronts and on backs. Press the bulk of the waist darts towards center, press the bulk of the bust darts towards top. Sew decorative stitches along the darts at 0.1 – 0.2 cm from seam.
3. Sew lower back to upper back. Serge and press towards top.
4. Serge center back edges separately. Sew center seam from top to mark zippers and from second mark to bottom. Press the seam apart. Sew in zipper.
5. Press placket in half lengthwise right side out. Sew outer placket to upper front. Press the seam allowance at placket. Turn under the seam allowance of the inner placket and topstitch into seam of. Sew a decorative stitch along the placket at 0.5 cm from seam. Make buttonholes on right front. Put right front onto left front and baste together along lower edge.
6. Sew a gathering stitch along the upper edge of lower front between the markings and gather fullness. Sew lower front to upper front. Serge and press towards top.
7. Sew shoulder and side seams, press towards the back and serge.
8. Fold the upper part of the pocket in half lengthwise and press. Turn seam allowances inside. Insert the pocket in between the seam allowances and sew from the right side with two parallel stitch lines at 0.1 and 0.5 cm from the edge. Serge the side and the lower edges of the pocket, turn inside and topstitch onto dress according to the markings.
9. Pin upper collar to lower collar, right sides together. Sew ends of collar and collar fall. Trim seam allowances. Turn the collar right side out, straighten and press. Sew a decorative stitch around all edges. Pin together parts of stand collar, right sides together and sew, inserting collar. Start and stop stitching exactly at the marked

seam of stand collar into neckline. Trim seam allowances, turn right side out and press.

10. Sew outer stand collar into neckline, fold inside open edge of internal stand collar and stitch in the ditch.

11. Sew sleeve seam. Serge and press towards back. Sew a gathering stitch along a sleeve cap and gather fullness. Sew cuff into a ring. Fold cuff in half lengthwise and press. Sew outer side of cuff to sleeve, press towards cuff. Turn under the inner edge and topstitch into seam of. Sew a decorative stitch along the cuff at 0.5 cm from seam. Sew sleeve into armhole. Serge and press.

12. Sew lower placket into ring. Press the seam allowances apart. Pin together lower placket in half lengthwise and press. Sew the outer edge to the lower part of the dress. Turn under the seam allowance of the inner edge and topstitch into seam of. Sew a decorative stitch at 0.5 cm from seam.

13. Make a buttonhole on the stand collar. Sew on buttons according to button holes.

## **TECHNICAL DRAWING:**

