

Long Dress - Sewing Pattern #2143

Recommendations on fabric: natural/mixed fabric suitable for dresses.

You will also need: dress zipper; fusible interfacing; 4 buttons.

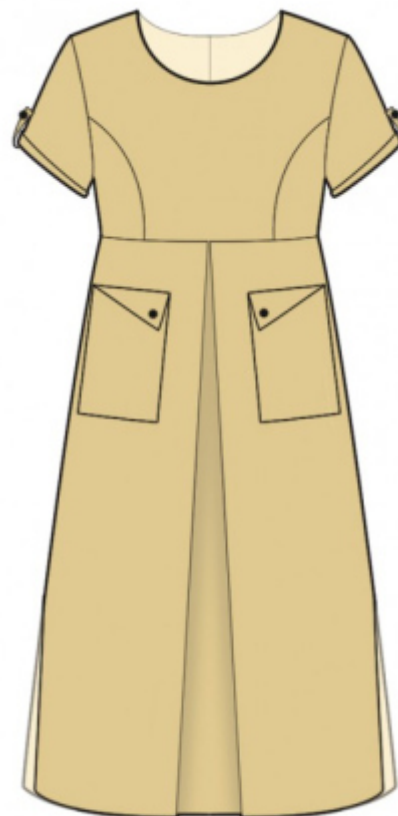
Seam allowances: all seams 1 cm; seam allowance for hem of dress – 2.0 cm; seam allowance for hem of sleeve – 3 cm.

Note on seam allowances:

- If the pattern has double contour the seam allowances are included. They are 1 cm unless specified otherwise.
- If the pattern has single contour, the seam allowances are NOT included and need to be added when laying out the pattern.

Note on length of fabric:

Attention! The amount of fabric needed for your pattern is not included. It will depend on the selected pattern size, the width, and design of the fabric you plan to use. First, print all the paper patterns and lay them out at the width of fabric you plan to use (usually from 90 to 150 cm). Measure how much fabric you will need. Don't forget to account for pieces that need to be cut multiple times and pieces that are cut on the fold.



CUTTING:

Note on cutting:

On the pattern pieces, "beam" means straight of grain. Lay out your pieces accordingly. Some pieces will be cut on the fold. This is noted on the pattern piece. Mark all notches and other design features such as pleats etc. from the pattern onto your fabric.

When sewing the garment, pay attention to notches, they must match up.

Main fabric:

1. Center back - cut 2
2. Center front - cut 1
3. Side back - cut 2
4. Side front - cut 2
5. Back skirt - cut 2
6. Front skirt - cut 1 on fold
7. Sleeve - cut 2

8. Sleeve decorative tab – cut 2
9. Back neck facing – cut 2
10. Front neck facing – cut 1
11. Pocket – cut 4

Fusible interfacing:

1. Back neck facing – cut 2
2. Front neck facing – cut 1

INSTRUCTIONS:

1. Apply fusible interfacing.
2. Sew Center Backs to Side Backs, serge seams and press towards center. Sew back skirt to upper back. Serge seams and press towards top.
3. Serge the center back edges separately. Sew center back seam from notch for zipper to bottom. Press the seam apart. Sew in zipper.
4. Pin pieces together of pocket right sides together and sew along the side edges and upper edge. Trim away corners and turn right side out. Pocket press. Serge the lower sleeve allowance of the pocket, turn inside and press. Topstitch the pocket onto the garment along the side and lower edges according to the markings. Fold the one-piece flap/corner towards bottom and press.
5. Sew Center Front to Side Fronts, serge seams and press towards center. Make and baste box pleats on the Front Skirt. Sew skirt to upper part. Serge seams and press towards top.
6. Sew shoulder seams. Serge seams and press towards back.
7. Serge side edges separately. Sew side seams from the armhole up to the notch for slit. Press the seam apart. Sew a decorative stitch along the slit at 0.5 cm from the edge.
8. Sew the shoulder seams of the neckline facings. Press the seam apart. Serge the outer edge. Pin facing onto dress, right side down and sew neckline. Clip seam allowances, clip into curves, fold facing onto wrong side and press. Slipstitch facing to zipper tape.
9. Fold decorative tabs in half lengthwise right sides together and sew along longer and one shorter edge. Turn right side out, slashing seam allowances in corners, straighten and press. Serge raw shorter edge. Topstitch decorative tabs according to the markings onto the wrong side of sleeves.
10. Sew sleeve seam, serge and press towards back. Sew sleeves into armholes matching notches, press seam, serge. Fold under the lower edge of the sleeve by 1 cm, then at 2 cm and topstitch.

11. Serge bottom edge of dress, press onto wrong side and topstitch.
12. Sew on buttons onto pockets. Sew on buttons, fixing the decorative tabs.

TECHNICAL DRAWING:

