

Dress With Peplum - Sewing Pattern #2128

Recommendations on fabric: thick natural/mixed fabric suitable for dresses.

You will also need: dress zipper.

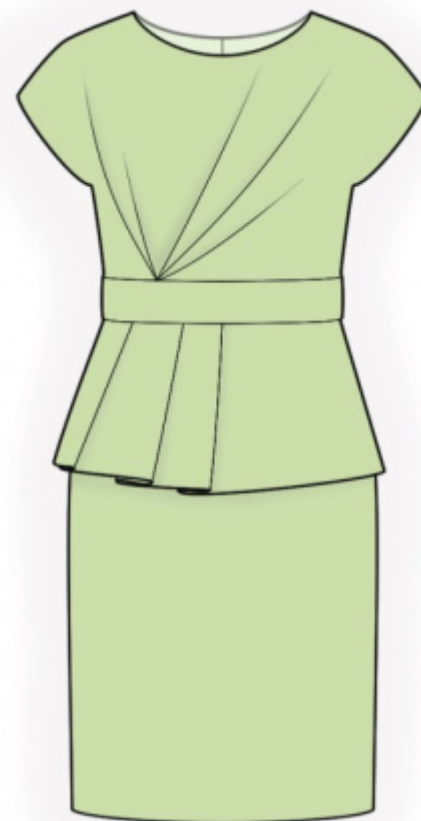
Seam allowances: all seams 1 cm; seam allowance for hem of garment and hem of peplum – 1.2 cm.

Note on seam allowances:

- If the pattern has double contour the seam allowances are included. They are 1 cm unless specified otherwise.
- If the pattern has single contour, the seam allowances are NOT included and need to be added when laying out the pattern.

Note on length of fabric:

Attention! The amount of fabric needed for your pattern is not included. It will depend on the selected pattern size, the width, and design of the fabric you plan to use. First, print all the paper patterns and lay them out at the width of fabric you plan to use (usually from 90 to 150 cm). Measure how much fabric you will need. Don't forget to account for pieces that need to be cut multiple times and pieces that are cut on the fold.



CUTTING:

Note on cutting:

On the pattern pieces, "beam" means straight of grain. Lay out your pieces accordingly. Some pieces will be cut on the fold. This is noted on the pattern piece. Mark all notches and other design features such as pleats etc. from the pattern onto your fabric.

When sewing the garment, pay attention to notches, they must match up.

Main fabric:

1. Upper back - cut 2
2. Back inset - cut 2
3. Lower back - cut 2
4. Back peplum - cut 2
5. Upper front - cut 1
6. Front inset - cut 1
7. Lower front - cut 1 on fold

8. Front peplum - cut 1

INSTRUCTIONS:

1. Make and baste pleats on upper backs, fold bulk towards side edge. Sew back inset to upper back, press seam allowances towards inset and serge.
2. Sew darts on lower backs, press the inner part towards center.
3. Make and baste pleats on upper front (two on the right, and three on the left), fold bulk towards side seams. Sew front inset to upper front, press seam allowances towards inset and serge.
4. Sew shoulder seams, press towards the back and serge.
5. Cut or use ready-made bias tape, its width should equal 4 cm length should equal the length of neckline + 4 cm. Fold bias tape in half lengthwise right side out and press. Pin bias tape to neckline from the right side and sew, fold bias tape onto wrong side and topstitch onto main piece along the seam.
6. Cut or use ready-made bias tape, its width should equal 4 cm length should equal the length of armhole. Fold bias tape in half lengthwise right side out and press. Pin bias tape onto armhole edge from the right side and sew, fold bias tape onto wrong side and topstitch onto main piece along the seam.
7. Make and baste pleats on front peplum, fold bulk towards side edge. Sew side seams of peplums, press the seam apart, serge. Serge lower edge of peplum, press onto wrong side and topstitch.
8. Sew side edges on lower part and on upper part, press towards the back and serge.
9. Pin peplum onto lower part, wrong side of peplum to right side of Shell and baste together along edges. Sew upper part to lower part, press towards top and serge.
10. Serge the center back edges separately, sew them from notch for zipper to bottom, press the seam apart. Sew in zipper.
11. Serge lower edge of garment, press onto wrong side and topstitch.

TECHNICAL DRAWING:

