

Dress With Inset - Sewing Pattern #2126

Recommendations on fabric: natural/mixed fabric suitable for dresses.

You will also need: fusible interfacing, dress zipper.

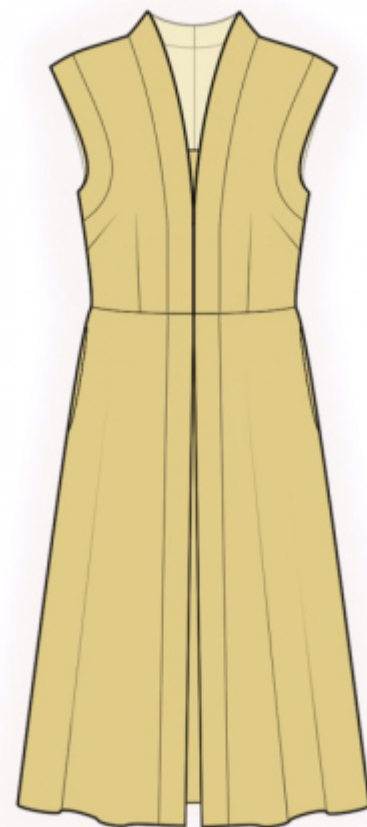
Seam allowances: seam allowance for hem of garment — 2.0 cm, seam allowance along the upper edge of front inset – 2 cm, other seams – 1.0 cm.

Note on seam allowances:

- If the pattern has double contour the seam allowances are included. They are 1 cm unless specified otherwise.
- If the pattern has single contour, the seam allowances are NOT included and need to be added when laying out the pattern.

Note on length of fabric:

Attention! The amount of fabric needed for your pattern is not included. It will depend on the selected pattern size, the width, and design of the fabric you plan to use. First, print all the paper patterns and lay them out at the width of fabric you plan to use (usually from 90 to 150 cm). Measure how much fabric you will need. Don't forget to account for pieces that need to be cut multiple times and pieces that are cut on the fold.



CUTTING:

Note on cutting:

On the pattern pieces, “beam” means straight of grain. Lay out your pieces accordingly. Some pieces will be cut on the fold. This is noted on the pattern piece. Mark all notches and other design features such as pleats etc. from the pattern onto your fabric.

When sewing the garment, pay attention to notches, they must match up.

Main fabric:

1. Upper back – cut 2
2. Lower back — cut 2
3. Upper front — cut 2
4. Lower front — cut 2
5. Upper inset — cut 1
6. Lower inset — cut 1

7. Upper facing — cut 4
8. Lower facing — cut 2
9. Back armhole facing – cut 4
10. Front armhole facing – cut 4
11. Pocket bag – cut 4

Fusible interfacing:

1. Upper facing — cut 2
2. Lower facing — cut 2
3. Back armhole facing – cut 2
4. Front armhole facing – cut 2

INSTRUCTIONS:

1. Apply fusible interfacing.
2. Sew darts on upper back and on upper front. Press bulk of waist darts towards center, press bulk of bust darts towards top.
3. Sew shoulder seams, press seam allowances towards back and serge.
4. Pin together upper facings right sides together and sew the outer edge. Clip seam allowances, turn pieces right side out, press.
5. Serge the upper edge of the upper inset, press onto wrong side and topstitch. Pin upper front onto upper inset, right sides together, insert the upper facing in between and sew, continue to stitch up to the back center edge. Press the seam allowances towards the main piece and serge.
6. Sew shoulder edges of armhole facings, press the seam apart. Pin together facings right sides together and sew the outer edge. Clip into curves, turn the piece right side out, press. Sew facing to armhole, press the seam allowances towards the main piece and serge.
7. Fold lower facing in half lengthwise right sides together and sew the lower corner. Turn the piece right side out, straighten, press. Sew the lower edge of lower inset, press onto wrong side and topstitch. Pin lower front onto lower inset, right sides together, insert lower facing in between and sew. Press the seam allowances towards the main piece and serge.
8. Sew upper back to lower back, press seam allowances towards top, serge. Sew upper front to lower front, press the seam apart, serge.
9. Serge the center back edges separately. Sew the center back seam from zipper mark to hem, press the seam apart. Sew in zipper.

10. Pin pocket bags onto the right side of lower front and lower back and sew. Serge the seam allowances. Sew side seams, sewing the pocket bags at the same time, press towards front and serge.

11. Serge the lower edge of garment, press onto wrong side and finish with hidden stitches.

TECHNICAL DRAWING:

