

Dress With Box Pleats - Sewing Pattern #2118

Recommendations on fabric: natural/mixed fabric suitable for dresses.

You will also need: dress zipper.

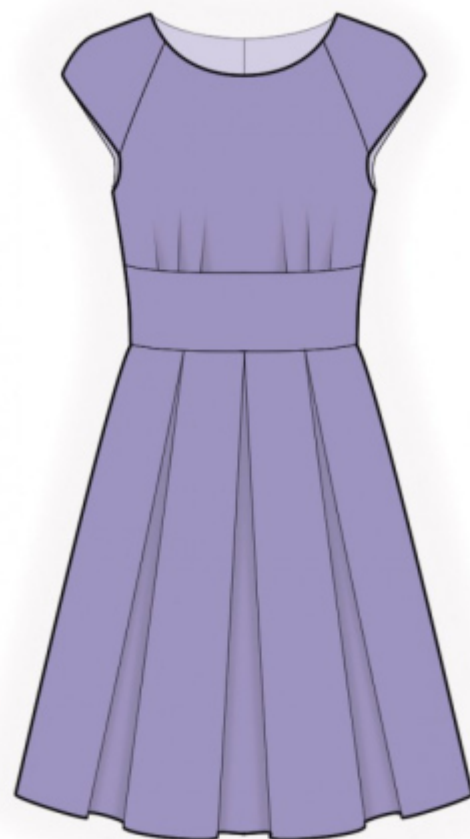
Seam allowances: seam allowance for hem of garment – 2.0 cm, seam allowance on lower edge of sleeve — 1.5 cm, other seams 1 cm.

Note on seam allowances:

- If the pattern has double contour the seam allowances are included. They are 1 cm unless specified otherwise.
- If the pattern has single contour, the seam allowances are NOT included and need to be added when laying out the pattern.

Note on length of fabric:

Attention! The amount of fabric needed for your pattern is not included. It will depend on the selected pattern size, the width, and design of the fabric you plan to use. First, print all the paper patterns and lay them out at the width of fabric you plan to use (usually from 90 to 150 cm). Measure how much fabric you will need. Don't forget to account for pieces that need to be cut multiple times and pieces that are cut on the fold.



CUTTING:

Note on cutting:

On the pattern pieces, “beam” means straight of grain. Lay out your pieces accordingly. Some pieces will be cut on the fold. This is noted on the pattern piece. Mark all notches and other design features such as pleats etc. from the pattern onto your fabric.

When sewing the garment, pay attention to notches, they must match up.

Main fabric:

1. Upper back – cut 2
2. Back inset – cut 2
3. Lower back — cut 2
4. Upper front -cut 1
5. Front inset — cut 1
6. Lower front — cut 1 on fold

- 7. Back sleeve — cut 2
- 8. Front sleeve — cut 2

INSTRUCTIONS:

1. Sew darts on back, press bulk towards center. Sew inset to back, press seam allowances towards inset and serge.
2. Make and baste box pleats on back skirt. Sew upper skirt to lower skirt, press towards top and serge.
3. Serge the center back edges separately. Sew the center back seam from zipper mark to hem, press the seam apart. Sew in zipper.
4. Make and baste pleats on upper front, (fold bulk towards side edge). Sew inset to front, press seam allowances towards inset and serge.
5. Make and baste box pleats on front skirt. Sew upper skirt to lower skirt, press towards top and serge.
6. Sew shoulder seams on sleeves, press towards the back and serge. Serge lower edge of sleeve, turn inside and topstitch. Sew sleeves to fronts and to back, press seam allowances towards sleeve and serge.
7. Sew side seams, press towards the back and serge.
8. Cut or use ready-made bias tape, its width should equal 4 cm and length should equal the length of lower armhole + 4 cm. Fold bias tape in half lengthwise right side out and press. Pin bias tape onto armhole edge from the right side and sew, clip seam allowances. Fold bias tape onto wrong side and topstitch onto main piece along the seam. Press seam.
9. Cut or use ready-made bias tape, its width should equal 4 cm and length should equal the length of neckline. Fold bias tape in half lengthwise right side out and press. Pin bias tape to neckline from the right side and sew, clip seam allowances. Fold bias tape onto wrong side and topstitch onto main piece along the seam. Press seam.
10. Serge the lower edge of garment, press onto wrong side and topstitch.

TECHNICAL DRAWING:

