

Dress With Wrap - Sewing Pattern #2074

Recommendations on fabric: thick natural/mixed fabric suitable for dresses.

You will also need: fusible interfacing; lining; dress zipper.

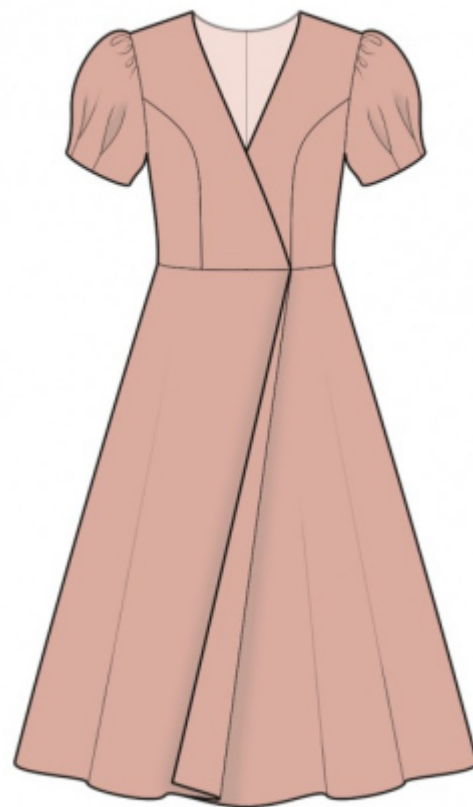
Seam allowances: all seams 1 cm; seam allowance for hem of garment – 2 cm.

Note on seam allowances:

- If the pattern has double contour the seam allowances are included. They are 1 cm unless specified otherwise.
- If the pattern has single contour, the seam allowances are NOT included and need to be added when laying out the pattern.

Note on length of fabric:

Attention! The amount of fabric needed for your pattern is not included. It will depend on the selected pattern size, the width, and design of the fabric you plan to use. First, print all the paper patterns and lay them out at the width of fabric you plan to use (usually from 90 to 150 cm). Measure how much fabric you will need. Don't forget to account for pieces that need to be cut multiple times and pieces that are cut on the fold.



CUTTING:

Note on cutting:

On the pattern pieces, "beam" means straight of grain. Lay out your pieces accordingly. Some pieces will be cut on the fold. This is noted on the pattern piece. Mark all notches and other design features such as pleats etc. from the pattern onto your fabric.

When sewing the garment, pay attention to notches, they must match up.

Main fabric:

1. Upper center back - cut 2
2. Upper side back - cut 2
3. Lower back - cut 2
4. Upper center front - cut 2
5. Upper side front - cut 2
6. Lower front - cut 2
7. Sleeve - cut 2

Lining:

1. Upper center back - cut 2
2. Upper side back - cut 2
3. Lower back - cut 2
4. Upper center front - cut 2
5. Upper side front - cut 2
6. Lower front - cut 2
7. Sleeve - cut 2

Lining is cut using the pattern blocks for Self fabric, except for the sleeve.

INSTRUCTIONS:

1. Apply a strap of fusible interfacing 1.5 cm wide: along the back neckline, the front neckline, along center seam of lower front, along lower edge of back and lower edge of front.
2. Sew princess seams on upper back, press the seam apart.
Sew princess seams on upper front, press the seam apart.
3. Sew side seams and shoulder seams on upper part, press the seam apart.
4. Sew side edges on lower part of the main piece, press the seam apart.
5. Sew together pieces of lining in the same way as you have sewn pieces from main fabric. Pin lining to upper part of dress right sides together and sew back neckline and front edge. Turn pieces right side out, straighten, press. Baste lining to Shell along lower edge, center back edge and armhole edge. Put right front onto left front, matching center lines, and baste together along lower edge.
6. Pin lining to lower part of dress and sew front edge. Turn pieces right side out, straighten, press. Baste lining to Shell along upper edge, lower edge and center back edge. Put right front onto left front, matching center lines, and baste together along upper edge.
7. Sew upper part to lower part, press towards top and serge.
8. Serge center back edges separately on each piece. Sew center seam from notch for zipper down to hem, press the seam apart. Sew in zipper.
9. Make and stitch box pleats on sleeve. Sew sleeve seam, press the seam apart. Sew a gathering stitch along upper edge and gather fullness.
10. Sew the sleeve seam on lining, press the seam apart. Pin lining to sleeve right sides together and sew lower edge. Turn pieces right side out, straighten, press. Pin lining to Shell along the cap edge, treat as one piece in the future.

11. Sew sleeves into armholes, serge and press.

12. Serge lower edge of garment, press onto wrong side and topstitch. Sew a decorative/fixing stitch along the hem of sleeve at 0.7 cm from the edge.

TECHNICAL DRAWING:

