

Recommendations on fabric: denim.

You will also need: fusible interfacing; separating zipper; 4 studs.

Seam allowances: 1 cm for all seams.

Note on seam allowances:

- If the pattern has double contour the seam allowances are included. They are 1 cm unless specified otherwise.
- If the pattern has single contour, the seam allowances are NOT included and need to be added when laying out the pattern.

Note on length of fabric:

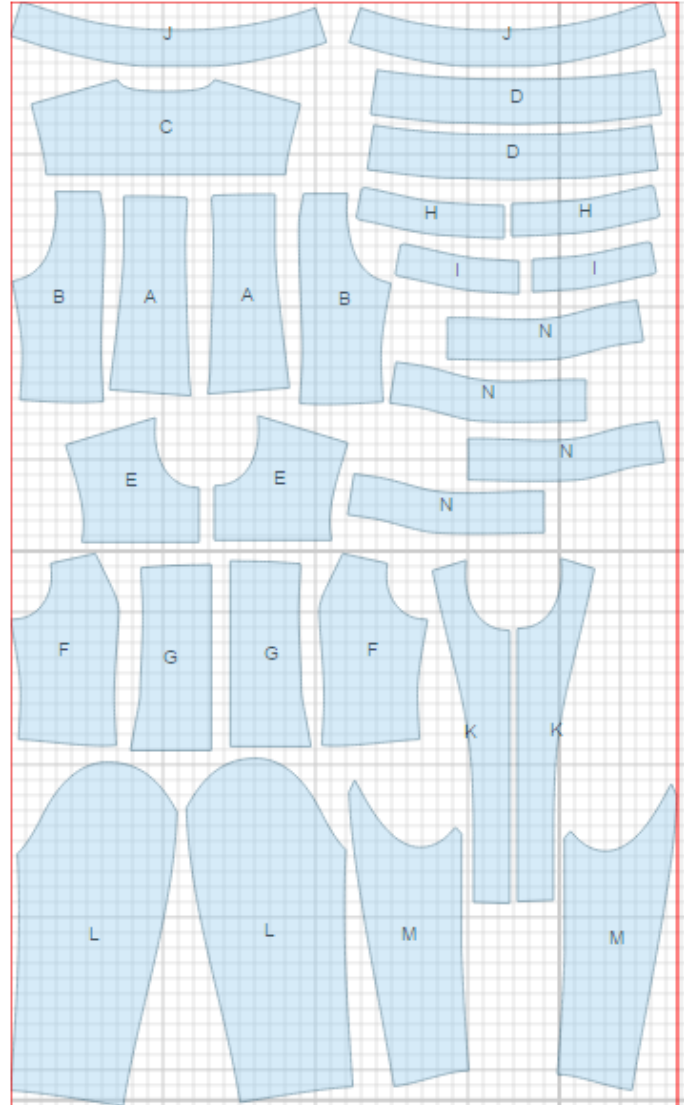
Attention! The amount of fabric needed for your pattern is not included. It will depend on the selected pattern size, the width, and design of the fabric you plan to use. First, print all the paper patterns and lay them out at the width of fabric you plan to use (usually from 90 to 150 cm). Measure how much fabric you will need. Don't forget to account for pieces that need to be cut multiple times and pieces that are cut on the fold.



CUTTING:

Main fabric:

1. Center back - cut 2 (A)
2. Side back - cut 2 (B)
3. Back yoke - cut 2 (C)
4. Back waistband - cut 2 (D)
5. Front yoke - cut 2 (E)
6. Side front - cut 2 (F)
7. Center front - cut 2 (G)
8. Front waistband - cut 2 (H)
9. Inner front waistband - cut 2 (I)
10. Stand-up collar - cut 2 (J)
11. Front facing - cut 2 (K)
12. Upper sleeve - cut 2 (L)
13. Lower sleeve - cut 2 (M)
14. Cuff - cut 4 (N)



Fusible interfacing:

1. Front facing - cut 2 (K)
2. Stand-up collar - cut 1 (J)
3. Cuff - cut 2 (N)
4. Back waistband - cut 1 (D)
5. Inner front waistband - cut 2 (I)

INSTRUCTIONS:

1. Apply fusible interfacing on wrong side of front facing, stand-up collar, cuff, back waistband, inner waistband.
2. Pin stand-up collar right sides together and sew outer contour to notch. Trim corners, turn right side out, and press.
3. Make pleats in center front and baste in place.
4. Sew side fronts to center fronts and side backs to back. Press seams toward center. Make a decorative stitch at 0.5 cm from seam along the princess seams.
5. Sew the yokes to fronts. Serge seam. Make a decorative stitch at 0.5 cm front seam joining yoke.
6. Sew center back seam. Press seam toward right back. Make a decorative stitch at 0.5 cm from joining seam.
7. Sew back yoke to back. Serge seam. Make a decorative stitch at 0.5 cm from seam joining yoke.
8. Sew the front waistbands to fronts and press joining seam towards waistbands. Sew the back waistband to back and press joining seam toward waistband.
9. Sew lower edge of front waistbands, right sides together, with the inner front waistband facings. Sew lower edge of back waistband, right sides together, with back waistband facing. Press, right sides out. Serge upper edge of of inner wasitbands.
10. Lay fronts side by side along center front. Align yoke seam. Sew the zipper to center front edges with teeth pointing toward the sides of jacket.
11. Serge front facing outer edge. Pin front facings on front right sides together and sew along center front. Turn right side out, straighten and press.
12. Sew shoulder/side seams. Serge and press side/shoulder seams towards back.
13. Sew outer stand-up collar into neckline, turn inner stand-up collar seam under, and topstitch along the seam joining outer stand-up collar. Make a decorative stitch along stand-up collar. Fix front facing at shoulder seams with 1-cm stitch.

-
14. Sew inner waistband center edge to front facing vertical edge. Press joining seam and turn it towards right side. Turn waistband corners wrong side out and trim. Press the inner waistband up to meet the outer waistband, and topstitch along seam joining waistband. Make a decorative stitch along edging at 0.5 cm from edge.
 15. Serge sleeve elbow edges. Sew elbow edge of upper and lower sleeve to slit notch. Press elbow seam open and topstitch slit allowance at 0.5 cm distance on sleeve. Make a decorative stitch at 0.5 cm from elbow seam. Sew sleeve front seam.
 16. Pin cuffs right sides together and sew along outer contour.
 17. Sew outer cuff to lower edge of sleeve, turn inner cuff under and topstitch along the seam joining outer cuff. Make a decorative stitch along cuff contour.
 18. Sew sleeves into armholes according to notches.
 19. Attach studs to stand-up collar and cuffs.

Our advice: if desired , you can topstitch pleats into center front with octagonal decorative stitch, as shown in the picture.

TECHNICAL DRAWING:

