

Recommendations on fabric: natural/mixed fabric suiting fabric.

You will also need: fusible interfacing, lining; shoulder pads, sleeve heads, 3 buttons.

Seam allowances: 1 cm for all seams, 3 cm for garment hem.

Note on seam allowances:

- If the pattern has double contour the seam allowances are included. They are 1 cm unless specified otherwise.
- If the pattern has single contour, the seam allowances are NOT included and need to be added when laying out the pattern.

Note on length of fabric:

Attention! The amount of fabric needed for your pattern is not included. It will depend on the selected pattern size, the width, and design of the fabric you plan to use. First, print all the paper patterns and lay them out at the width of fabric you plan to use (usually from 90 to 150 cm). Measure how much fabric you will need. Don't forget to account for pieces that need to be cut multiple times and pieces that are cut on the fold.



CUTTING:

Main fabric:

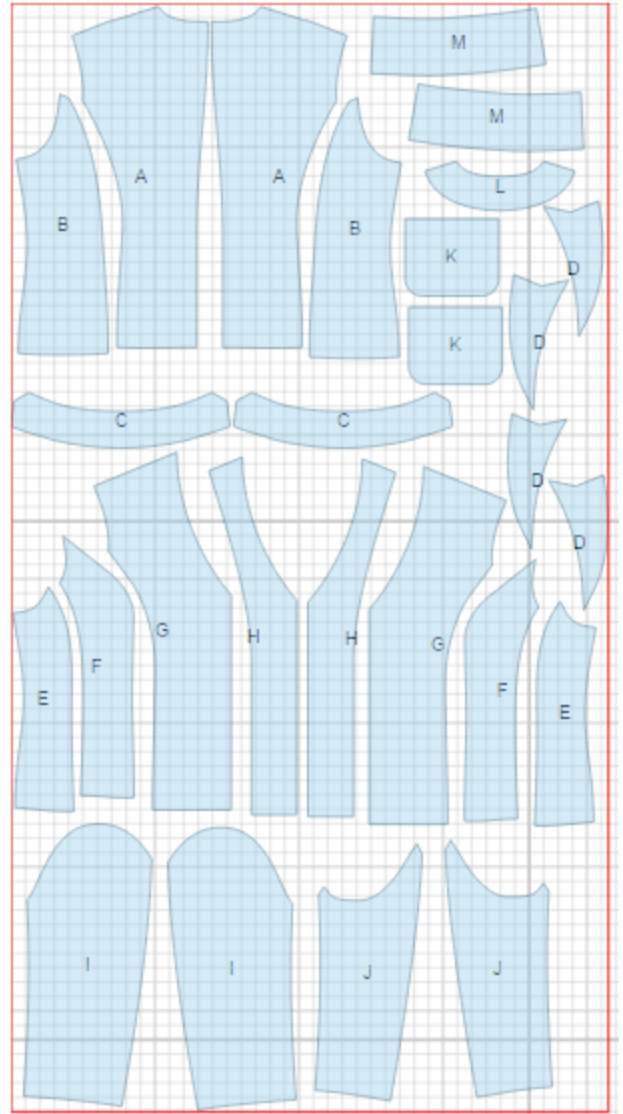
1. Center back – cut 2 (A)
2. Side back – cut 2 (B)
3. Collar – cut 2 (C)
4. Lapel– cut 4 (D)
5. Side front – cut 2 (E)
6. Middle front - cut 2 (F)
7. Center front - cut 2 (G)
8. Front facing - cut 2 (H)
9. Upper sleeve – cut 2 (I)
10. Lower sleeve – cut 2 (J)
11. Pocket – cut 2 (K)
12. Back neck facing - cut 1 (L)
13. Sleeve hem facing - cut 2 (M)

Lining:

1. Center back – cut 2 (A)
2. Side back – cut 2 (B)
3. Side front – cut 2 (E)
4. Middle front - cut 2 (F)
5. Upper sleeve – cut 2 (I)
6. Lower sleeve – cut 2 (J)
7. Pocket - cut 2 (K)

*ATTENTION: Lining is cut using main fabric patterns excluding the width of front band facing. Add a pleat on lining.

Fusible interfacing: front facing, back neck facing, collar, lapel, center front, sleeve hem facing.



INSTRUCTIONS:

1. Apply interfacing to listed pieces.
2. Mark and sew darts on back. Press bulk towards center.
3. Sew lapels to collars, press seam open.
4. Sew center back seam, press seam open.
5. Sew middle fronts to side fronts and to center fronts. Serge and press seams towards center.
6. Mark pocket location. Place pockets and lining pocket pieces right sides together and sew on upper edge. Sew pockets on contour leaving an opening in side seam of approx 5 cm. Clip into seam on curves, turn pocket right side out and press. Topstitch pocket according to marking.
7. Sew side and shoulder seams. Press seams open.
8. Sew outer collar with lapel into neckline. Press seam open.
9. Sew shoulder seams of front facing and back neck facing. Press seams open. Sew inner collar with lapel into front facing/back facing neckline. Press seam open.
10. Place front facing and front right sides together, pin and sew along front band, lapel and collar. Sew lower edges of front facing to front exactly on marked line of hem turnup. Trim seam in lower corners of front band. Topstitch front band seam allowance onto front facing at closure section and onto front band at lapel section. Make a stitch at 0.2 cm from seam (leaving 3 cm to neckline and to lower corner). Turn bands right side out, straighten seams.
11. Sew lower sleeve seam, leaving a slit. Press seam open, pressing the slit. Sew and press open upper sleeve seam. Finish lower edge of sleeve and slit with sleeve hem facing. Press.
12. Make a gathering stitch along sleeve cap. Sew sleeves to armholes matching notches and adjusting ease. Sew in sleeve heads and shoulder pads.
13. Sew lining pieces together and leaving an opening in right front seam of sleeve.
14. Sew lining to inner edges of front/back neck facing. Fasten collar allowances close to seams.

15. Sew lining to hem of jacket and to sleeve hem facing. Turn jacket right side out through the opening in sleeve. Sew opening closed.

16. Make buttonholes on right front. Sew buttons on left front.

TECHNICAL DRAWING:

