

Sewing Pattern — Blouse 4246

Recommendations on fabric: natural or mixed knit fabric of medium stretchiness of two colors

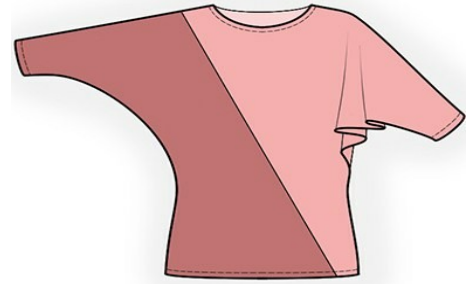
If the pattern has double contour the seam allowances are included.

Seam allowances are NOT included by default and need to be added when laying out and cutting details if your pattern has single contour.

Seam allowance: along the edge of sleeve – 1.5 cm, along neckline - 1.5 cm, hem – 2 cm, all other seams - 0.7 cm.

Attention! First of all please print all the paper patterns and lay them out at the width of fabric you plan to use (usually from 90 to 150 cm) to see how much fabric you will need. Don't forget to count pair parts and symmetrical parts.

When sewing the garment, pay attention to notches, they must coincide.



CUTTING:

Main fabric 1:

1. Left part of the front – 1 detail
2. Upper left part of the back – 1 detail
3. Upper right part of the back – 1 detail

Main fabric 2:

1. Right part of the front - 1 detail
2. Lower left part of the back – 1 detail
3. Lower right part of the back – 1 detail

Advice:

Knitted fabric details are sewn together with special elastic or narrow zig-zag stitch. When serging cut seam allowances to 0.6 – 0.8 cm. Seam allowance on turnup is stitched with twin needles to save stretchiness. Details also can be sewn together via 3 or 4 – threaded serger.

INSTRUCTIONS:

1. Sew upper and lower front parts. Serge seam allowances and press downwards.
2. Sew center edge of the back on upper parts. Serge seam allowance and press onto left side. Sew center edge of the back on lower parts. Serge seam allowance and press onto left side.
3. Sew upper and lower parts of the back. Serge seam allowances and press downwards.
4. Sew shoulder seams together with upper edge of sleeve. Serge seam allowance. Sew side seams, stitching together lower edge of sleeve at the same time. Serge seam allowance.
5. Serge neckline edge. Turn onto wrong side, press and topstitch.
6. Serge hem of garment and hem of sleeve. Turn onto wrong side, press and topstitch.

TECHNICAL DRAWING: