

Recommendations on fabric: natural or mixed lightweight fabric suitable for dresses.

You will also need: fusible interfacing, 2 buttons.

Seam allowances: all seams – 1.0 cm.

Note on seam allowances:

- If the pattern has double contour the seam allowances are included. They are 1 cm unless specified otherwise.

- If the pattern has single contour, the seam allowances are NOT included and need to be added when laying out the pattern.

Note on length of fabric:

Attention! The amount of fabric needed for your pattern is not included. It will depend on the selected pattern size, the width, and design of the fabric you plan to use. First, print all the paper patterns and lay them out at the width of fabric you plan to use (usually from 90 to 150 cm). Measure how much fabric you will need. Don't forget to account for pieces that need to be cut multiple times and pieces that are cut on the fold.



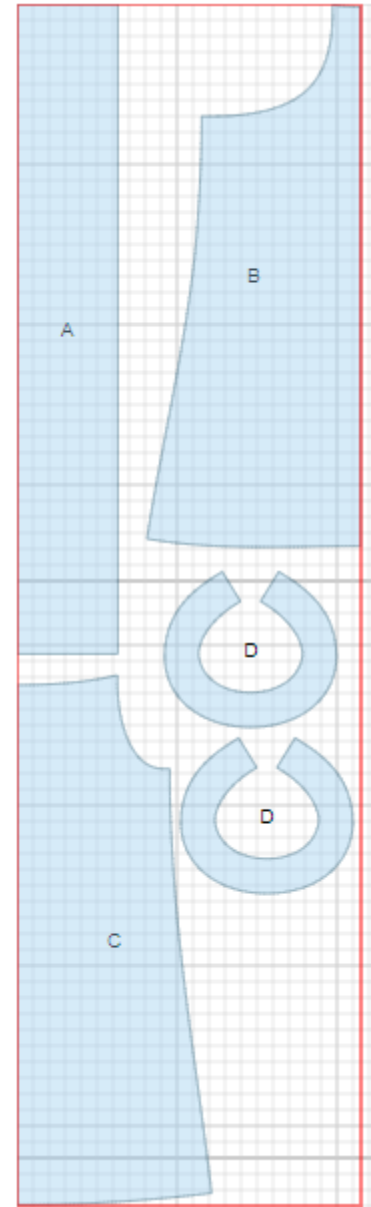
CUTTING:

Main fabric:

1. Placket – cut 1 (A)
2. Back – cut 1 on fold (B)
3. Front – cut 1 on fold (C)
4. Facing – cut 2 (D)

Fusible interfacing:

1. Placket – cut 1 (A)
2. Facing - cut 1 (D)



INSTRUCTIONS:

1. Apply fusible interfacing to upper facing and placket.
2. Cut a bias tape for trimming back and front cuts. Length of tape is equal to double length of the cut + 2 cm, width of the tape is 5 cm. Press bias tape in half lengthwise wrong sides together. Mark cut line on fabric. Make the cut. Unfold the cut into straight line. Pin bias tape to cut from the right side and sew. Seam width is 0.5 - 0.7cm, at lower (corner) point - 0.2 cm. Turn bias tape to inside and topstitch into connecting seam.
3. Make a gathering stitch on upper edge of front and gather fullness.
4. Sew side seams. Serge and press seams towards back.
5. Cut a bias tape from main fabric. Width is 4 cm. Length is equal to armhole length. Press bias tape in half lengthwise wrong sides together. Pin bias tape to armhole and sew. Turn bias tape to inside and topstitch along fold.
6. Cut a bias tape of 2.5 cm wide and 10 cm long. Fold bias tape lengthwise right sides together and sew at 0.3 cm from the fold. Cut seam off close to stitch. Turn tape out and straighten. Cut into loops of 4 cm long each.
7. Place facings right sides together and sew upper and side edges inserting loops. Trim seams. Turn facing right side out and press. Turn lower edges under and press. Sew upper edges of back and front to lower facing according to marking. Sew upper facing to lower one into the edge. Press.
8. Fold placket in half lengthwise right side out and press. Unfold placket and sew into ring. Press seam open. Make a gathering stitch on lower edge of dress and gather fullness. Sew upper part of placket to dress. Press seam towards placket. Turn under and press the edge of inner part of placket. Topstitch into upper placket connecting seam.
9. Sew buttons on facing.

TECHNICAL DRAWING:

