

Recommendations on fabric: low to medium stretch-knit, natural or mixed dress fabric.

You will also need: bias tape.

Seam allowances: upper edges of front/back and lower edges of flounces – 1.5 cm, other seams – 0.7 cm.

**Note on seam allowances:**

- If the pattern has double contour the seam allowances are included. They are 1 cm unless specified otherwise.
- If the pattern has single contour, the seam allowances are NOT included and need to be added when laying out the pattern.

**Note on length of fabric:**

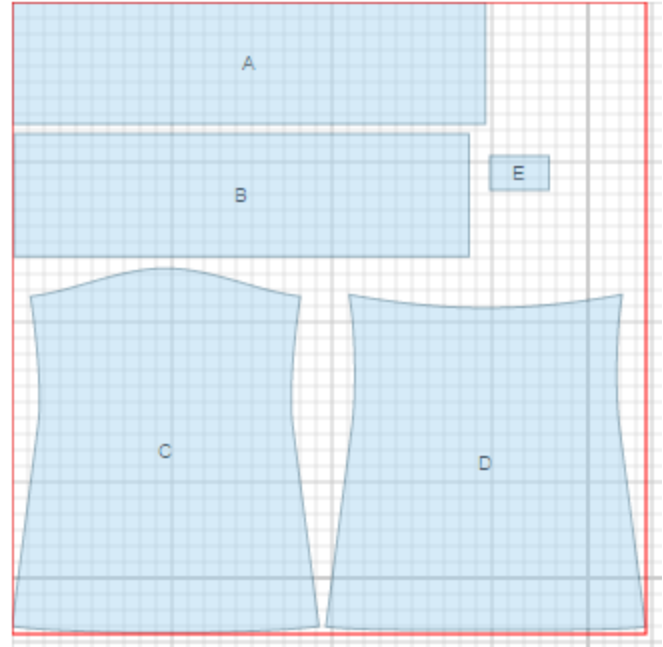
*Attention! The amount of fabric needed for your pattern is not included. It will depend on the selected pattern size, the width, and design of the fabric you plan to use. First, print all the paper patterns and lay them out at the width of fabric you plan to use (usually from 90 to 150 cm). Measure how much fabric you will need. Don't forget to account for pieces that need to be cut multiple times and pieces that are cut on the fold.*



**CUTTING:**

Main fabric:

1. Back flounce - cut 1 (A)
2. Front flounce - cut 1 (B)
3. Front - cut 1 (C)
4. Back - cut 1 (D)
5. Strap - cut 1 (E)



**Advice:** Knit fabric pieces are sewn together with special elastic or narrow zig-zag stitch. Seam allowance on hem is stitched with twin needles to save stretchiness. Pieces can also be sewn together with 3 or 4 – thread serger. When serging, cut seam allowances to 0.6 – 0.8 cm.

---

## INSTRUCTIONS:

1. Fold strap in half lengthwise right sides together and sew long edge. Turn strap right side out, press placing seam in center. Fold in half short ends together and press.
2. Sew side seams. Serge and press seam towards back.
3. Serge upper edge. Fold under, press. Place strap under so that open edges match and topstitch catching the strap.
4. Cut two belt carriers from main fabric of 3 cm wide. Length is equal to lower edge of back/front + 2 cm. Turn short edges under and press. Turn upper edge of carrier at 0.7 cm under and press. Pin carrier to lower edge of dress matching lower unsewn edges and topstitch along the fold.
5. Sew side seams of flounces. Serge and press towards back.
6. Make a gathering stitch along upper edge of flounce and gather fullness. Sew flounce to dress, serge and press seam.
7. Serge lower edge of flounce, fold under, press and topstitch.
8. Make a neck tie and two ties for carrier from bias tape.

TECHNICAL DRAWING:

