

## Sewing Pattern — Dress 5941

Recommendations on fabric: light-weight suiting fabric

You will also need: lining; fusible interfacing; invisible zipper

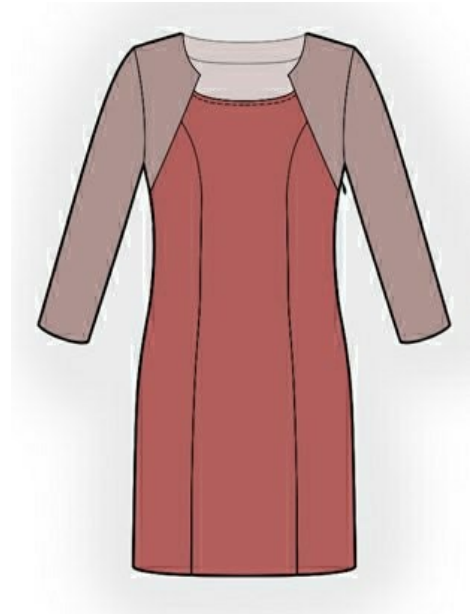
If the pattern has a double line around it, the seam allowances are included.

**Note:** By default, seam allowances are NOT included (single line) and will need to be added when laying out and cutting details.

Seam allowance: all seams 1 cm; hem of the dress and hem of sleeve – 3.0 cm

Attention! First of all please print all the paper patterns and lay them out at the width of fabric you plan to use (usually from 90 to 150 cm) to see how much fabric you will need. Don't forget to take into account pieces to be duplicated or cut on a fold.

When sewing the garment, pay attention to notches, they must match up with corresponding pieces.



### **CUTTING:**

The word, “beam” used on some patterns means “straight of grain”. Some pieces will be cut on the fold, this is noted on the pattern piece. Mark all notches and other design features such as darts, pleats etc. from the pattern onto your fabric.

Darts: The fold of the dart is always pressed toward the center of your garment, or down toward the hem.

#### Main fabric:

1. Back yoke - 1 detail
2. Side back - 2 details
3. Central back - 2 details
4. Front yoke – 2 detail
5. Side front – 2 details
6. Central front - 1 detail
7. Sleeve - 2 details
8. Back neckline facing – 1 detail
9. Front neckline facing – 2 details

#### Lining:

1. Facing of lower edge of yoke – 1 detail

Interfacing:

1. Back facing – 1 detail
2. Front facing part – 2 details

**INSTRUCTIONS:**

1. Apply interfacing to facings.
2. Sew darts on back yoke. Press darts toward center. Place facing of lower edge and yoke right sides together and overstretch lower edge of yoke. Trim seam allowances on curves, turn the facing wrong side out.
3. Apply interfacing to wrong side of the vent on both central backs. On right side mark a center seam line (vent fold-line). Serge center edge of back separately on each detail, serging the vent at the same time. Sew center edge of back from top edge down to edge of the vent. Trim corner of vent seam allowance on right part. Press apart center seam. Press right side of the vent at 1 cm and topstitch. Press seam allowances of the vent toward center and topstitch on top with machine stitch.
4. Sew princess seams on back, press seam allowances toward center, serge. Put yoke on back and sew the facing to back, matching facing edge and upper edge of lower back. Serge seams. Topstitch yoke onto back at 2 cm from the fold.
5. Sew princess edges on front, press seam allowances toward center, serge.
6. Cut a bias tape from main fabric of 5 cm wide and as long as neckline edge. Press it in half lengthwise wrong sides together, place on front neckline edge and overstretch. Trim seam on curves, turn bias tape wrong side out and topstitch onto front along the fold.
7. On yoke trim seam allowance near top notch. Stitch yoke to front, press seam allowances to armhole and serge.
8. Serge separately left side edges of front and of back. Sew left side edge from armhole edge to top notch and from lower notch down to hem. Press apart seam allowances and press zipper slits. Sew zipper into left side seam .
9. Sew right side seam, press seam onto back and serge. Sew shoulder seams, press seam onto back and serge.
10. Sew shoulder seams of neckline facings, press seam allowances apart. Serge outer edge. Put facing on dress and overstretch neckline edge and the corner. Trim seam allowances on curves, cut off in corner, turn facing wrong side out, press. Fasten to shoulder seams.
11. Sew edge of sleeve. Press and serge seam. Sew sleeve into armhole, leveling notches. Press and serge seam.
12. Press seam allowance of the dress hem and hem of sleeve onto wrong side and undersew with invisible stitches.

**TECHNICAL DRAWING:**

