

Recommendations on fabric: natural or mixed dress fabric, contrast fabric (optional).

You will also need: 2 buttons, fusible interfacing.

Seam allowances: hem of dress – 3.0 cm, other seams – 1 cm.

Note on seam allowances:

- If the pattern has double contour the seam allowances are included. They are 1 cm unless specified otherwise.
- If the pattern has single contour, the seam allowances are NOT included and need to be added when laying out the pattern.

Note on length of fabric:

Attention! The amount of fabric needed for your pattern is not included. It will depend on the selected pattern size, the width, and design of the fabric you plan to use. First, print all the paper patterns and lay them out at the width of fabric you plan to use (usually from 90 to 150 cm). Measure how much fabric you will need. Don't forget to account for pieces that need to be cut multiple times and pieces that are cut on the fold.

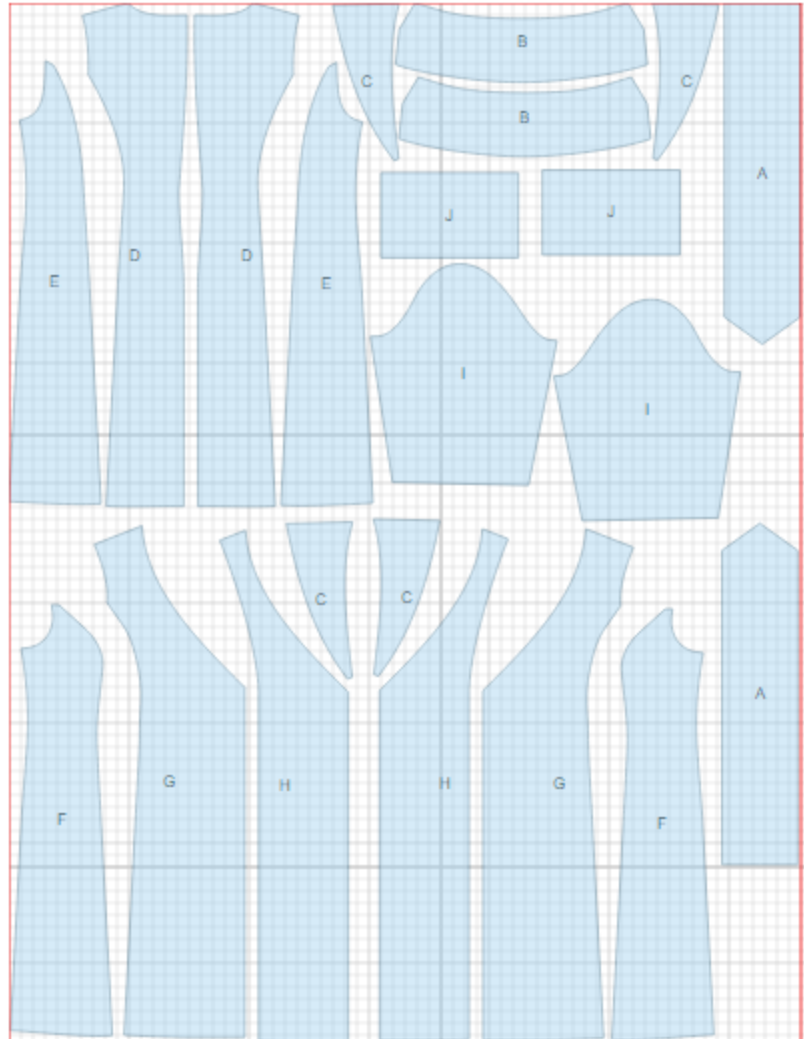


CUTTING:

Main fabric:

1. Tie - cut 2 (A)
2. Collar* - cut 2 (B)
3. Lapel* - cut 4 (C)
4. Center back - cut 2 (D)
5. Side back - cut 2 (E)
6. Side front - cut 2 (F)
7. Center front - cut 2 (G)
8. Front facing - cut 2 (H)
9. Sleeve - cut 2 (I)
10. Cuff* - cut 2 (J)

*You can cut these pieces from contrast fabric if desired.



Fusible interfacing:

1. Collar - cut 1 (B)
2. Lapel - cut 2 (C)
3. Front facing - cut 2 (H)

INSTRUCTIONS:

1. Apply fusible interfacing to listed pieces.
2. Place collars right sides together and sew outer contour. Clip seam on curves, trim in corners. Place lapels right sides together, insert collar between them and sew. Trim seam in corners, clip on curves. Turn lapel right side out and press.
3. Fold ties in half lengthwise, right sides together, and sew long and slanting edges. Trim seams in corner. Turn ties right side out and press.
4. Sew center back seam. Serge and press towards left side. Sew side backs to center back, serge and press seam towards center. Sew side fronts to center fronts, serge and press seam towards center.
5. Sew shoulder and side seams inserting tie into left side seam. Serge and press seam towards back.
6. Serge inner edge of front facing. Baste collar with lapels into neckline. Pin front facing on front and sew inner corner, front edge, and front neckline to shoulder seam. Insert belt as marked. Stop stitch at shoulder seam, clip into seam allowance on outer collar and sew only inner collar into neckline. Trim seam, turn front facing to wrong side, straighten seams, press. Turn lower edge of outer collar under and topstitch into inner collar connecting seam.
7. Fold cuff in half along center line, right sides together, and sew short sides. Turn right side out, straighten and press. Start and finish stitch exactly at marked line of cuff connection. Sew sleeve seam, serge and press towards back. Sew outer cuff to lower edge of sleeve, press seam towards cuff. Turn edge of inner cuff under, and topstitch into connecting seam.
8. Make a gathering stitch along sleeve cap to adjust ease. Sew sleeves into armholes, matching notches and adjusting ease on sleeve cap. Serge and press seams.
9. Serge lower edge of the dress, turn under, press and slipstitch.
10. Make buttonholes on fronts. Sew buttons accordingly. One outer and one hidden button.

TECHNICAL DRAWING:

