

## Sleeveless Dress With Decorative Buttons - Sewing Pattern #2767

Recommendations on fabric: natural/mixed fabric suitable for dresses.

You will also need: fusible interfacing; dress zipper; 3 buttons.

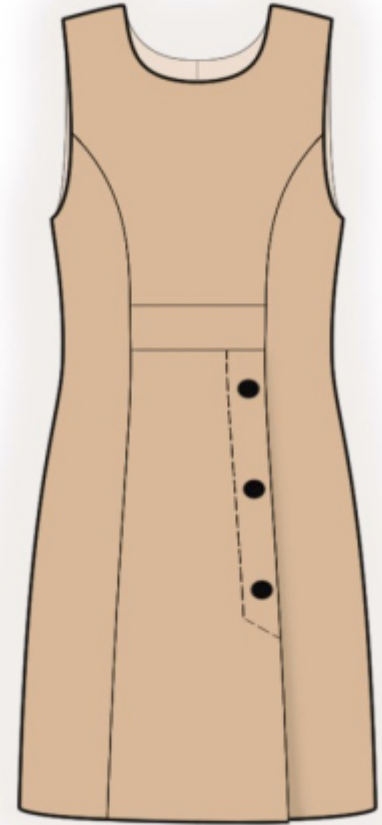
Seam allowances: all seams 1 cm; seam allowance for hem of garment - 2 cm.

### Note on seam allowances:

- If the pattern has double contour the seam allowances are included. They are 1 cm unless specified otherwise.
- If the pattern has single contour, the seam allowances are NOT included and need to be added when laying out the pattern.

### Note on length of fabric:

*Attention! The amount of fabric needed for your pattern is not included. It will depend on the selected pattern size, the width, and design of the fabric you plan to use. First, print all the paper patterns and lay them out at the width of fabric you plan to use (usually from 90 to 150 cm). Measure how much fabric you will need. Don't forget to account for pieces that need to be cut multiple times and pieces that are cut on the fold.*



## CUTTING:

### Note on cutting:

*On the pattern pieces, "beam" means straight of grain. Lay out your pieces accordingly. Some pieces will be cut on the fold. This is noted on the pattern piece. Mark all notches and other design features such as pleats etc. from the pattern onto your fabric.*

*When sewing the garment, pay attention to notches, they must match up.*

Main fabric:

1. Center back - cut 2
2. Side back - cut 2
3. Upper center front - cut 1 on fold
4. Lower center front - cut 1
5. Side front right - cut 1
6. Side front left - cut 1
7. Back neck facing - cut 2

8. Front neck facing - cut 1
9. Inset - cut 1

Fusible interfacing:

1. Back neck facing - cut 2
2. Front neck facing - cut 1

## **INSTRUCTIONS:**

1. Apply fusible interfacing to the mentioned pieces and to the area of vent on the skirt.
2. Sew side backs to center back, press seam allowances towards center, serge.
3. Serge center back edges separately on each piece. Sew center back seam from marking for zipper to lower edge, press the seam apart. Sew in zipper.
4. Serge the vent on the right side front. Fold inside the seam allowance and topstitch.
5. Sew the inset to the upper center front. Serge the seam allowances and press towards inset.
6. Serge the vent on the lower center front. Fold the seam allowance onto wrong side and press. Sew a decorative/fixing stitch along the vent.
7. Pin the lower center front onto the side piece and baste together along the upper edge of the vent. Sew the center front to the lower front and to the side front, clipping into seam allowance near corner. Serge the seam allowances and press: press the seam allowances of the princess seams towards the center, press the horizontal seam allowances towards the inset.
8. Sew right side front to center front, press seam allowances towards center, serge.
9. Sew shoulder seams, press towards the back and serge.
10. Cut (or take ready) bias tape , its width should equal 4 cm and length should equal the length of armhole + 4 cm. Fold bias tape in half lengthwise right side out and press. Pin bias tape to armhole edge from the right side and sew. Fold bias tape onto wrong side, clip into seam allowances and topstitch onto main piece along the seam. Press seam.
11. Sew side seams, press towards the back and serge.
12. Sew the shoulder seams of the neckline facings, press the seam apart. Serge the outer edge. Pin facing to garment right sides together and sew the neckline. Clip into curves, turn the facings onto the wrong side and press. Slipstitch to shoulder seams and to zipper tape.

13. Serge bottom edge of dress, press onto wrong side and topstitch.
14. Sew on buttons onto the vent, connecting the lower pieces.

**TECHNICAL DRAWING:**

