

Dress With Seamless Sleeve - Sewing Pattern #2762

Recommendations on fabric: natural/mixed fabric suitable for dresses.

You will also need: fusible interfacing, 8 buttons.

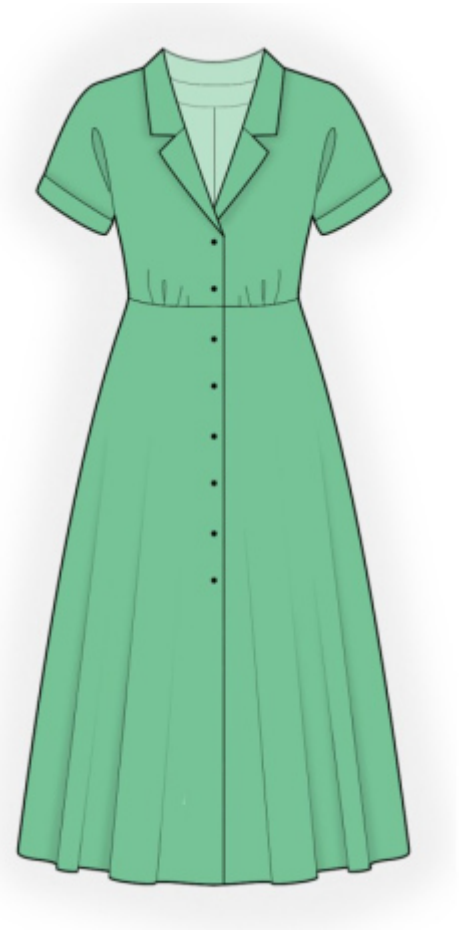
Seam allowances: all seams 1 cm. Seam allowance for hem of garment - 2 cm.

Note on seam allowances:

- If the pattern has double contour the seam allowances are included. They are 1 cm unless specified otherwise.
- If the pattern has single contour, the seam allowances are NOT included and need to be added when laying out the pattern.

Note on length of fabric:

Attention! The amount of fabric needed for your pattern is not included. It will depend on the selected pattern size, the width, and design of the fabric you plan to use. First, print all the paper patterns and lay them out at the width of fabric you plan to use (usually from 90 to 150 cm). Measure how much fabric you will need. Don't forget to account for pieces that need to be cut multiple times and pieces that are cut on the fold.



CUTTING:

Note on cutting:

On the pattern pieces, "beam" means straight of grain. Lay out your pieces accordingly. Some pieces will be cut on the fold. This is noted on the pattern piece. Mark all notches and other design features such as pleats etc. from the pattern onto your fabric.

When sewing the garment, pay attention to notches, they must match up.

Main fabric:

1. Upper back - cut 1 on fold
2. Lower back - cut 2
3. Upper front - cut 2
4. Lower front - cut 2
5. Center front facing - cut 2
6. Collar - cut 2
7. Cuff - cut 2

8. Back neck facing – cut 1

Fusible interfacing:

1. Center front facing - cut 2
2. Collar - cut 1
3. Cuff – cut 2
4. Back neck facing – cut 1

INSTRUCTIONS:

1. Apply fusible interfacing.
2. Make and baste a box pleat on upper back. Sew a gathering stitch along the lower edge of the Upper Back and gather fullness.
3. Sew center seam on lower back, press seam allowances towards left and serge. Sew upper back to lower back, press towards top and serge.
4. Sew a gathering stitch along the lower edge of upper front and gather fullness.
5. Sew upper front to lower front, press towards top and serge.
6. Sew shoulder seams, press towards the back and serge.
7. Pin collars together, right sides together, and sew collar ends and collar fall. Start and stop sewing exactly at the marked line of the seam between collar and garment. Trim away corners, snip into seam allowance near the mark. Turn the collar right side out, straighten and press.
8. Sew shoulder edges of center front facings and back neckline facing, press the seam apart. Serge the outer edge.
9. Place center front facing onto front right sides together, pin together and sew along the center front edge and the lapel. Sew upwards up to the notch marking the end of collar seam. Trim away corners. Turn center front facings right side out, straighten seams.
10. Sew the lower collar into the neckline of the garment, sew upper collar into the neckline of the back neckline facing and of the center front facing. Press apart seam allowances of collars and baste together close to seam.
11. Sew side seams, press towards the back and serge.
12. Sew cuff into a ring, press the seam apart. Fold cuff in half lengthwise right side out. Sew cuff to wrong side of sleeve, serge. Fold cuff to right side.

13. Fold and press lower edge onto wrong side at 1 cm, then again at 1 cm and topstitch.
14. Make buttonholes on right front, sew on buttons onto left front.

TECHNICAL DRAWING:

