

## Knit Dress - Sewing Pattern #2751

Recommendations on fabric: Natural/mixed knit fabric of medium stretchiness in two colors.

You will also need: knit fusible interfacing.

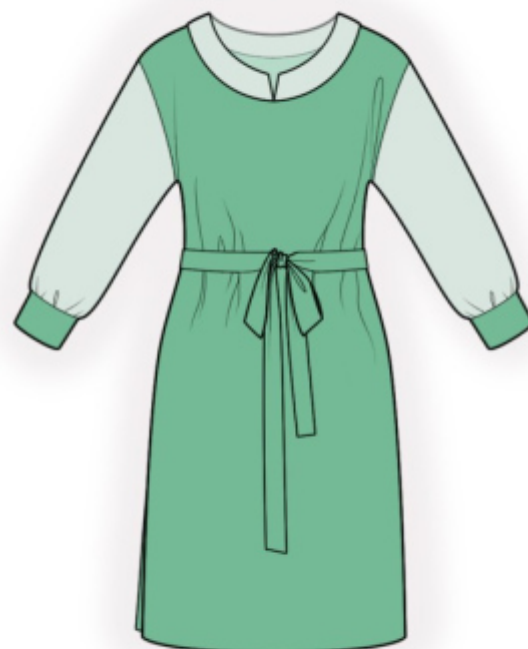
Seam allowances: all seams 1 cm. Seam allowance for hem of garment - 3 cm.

### Note on seam allowances:

- If the pattern has double contour the seam allowances are included. They are 1 cm unless specified otherwise.
- If the pattern has single contour, the seam allowances are NOT included and need to be added when laying out the pattern.

### Note on length of fabric:

*Attention! The amount of fabric needed for your pattern is not included. It will depend on the selected pattern size, the width, and design of the fabric you plan to use. First, print all the paper patterns and lay them out at the width of fabric you plan to use (usually from 90 to 150 cm). Measure how much fabric you will need. Don't forget to account for pieces that need to be cut multiple times and pieces that are cut on the fold.*



## CUTTING:

### Note on cutting:

*On the pattern pieces, "beam" means straight of grain. Lay out your pieces accordingly. Some pieces will be cut on the fold. This is noted on the pattern piece. Mark all notches and other design features such as pleats etc. from the pattern onto your fabric.*

*When sewing the garment, pay attention to notches, they must match up.*

Main fabric:

1. Back - cut 1 on fold
2. Front - cut 1 on fold
3. Cuff - cut 2
4. Belt - cut 1 on fold

Main fabric 1:

1. Sleeve - cut 2

2. Collar - cut 2

Fusible interfacing:

1. Collar - cut 1
2. Cuff - cut 2
3. Belt - cut 1 on fold

**INSTRUCTIONS:**

1. Apply fusible interfacing.
2. Sew shoulder seams, press towards the back and serge.
3. Pin together collars right sides together and sew along the outer edges. Trim away corners, snip into seam allowance near the mark. Turn the collar right side out, straighten and press.
4. Sew the collar into the neckline of the main piece. Serge the seam allowances, press towards the main piece and topstitch at 0.5 cm from seam.
5. Sew the sleeve to the garment, press towards the main piece and serge.
6. Serge separately the side edges and sleeve edges. Sew the sleeves' edges and the side edges continuously up to the mark of the side slit. Press the seam apart, also press the slits. Sew a decorative/fixing stitch along the edges of the slits at 0.1 cm.
7. Sew cuff into a ring. Fold cuff in half lengthwise and press. Sew cuff to lower edge of sleeve, slightly stretching it. Serge and press towards top.
8. Serge lower edge of garment, press onto wrong side and topstitch.
9. Fold belt in half lengthwise right sides together and sew around all edges, leaving an opening for turning. Turn belt right side out, straighten, press. Sew the opening closed.

**TECHNICAL DRAWING:**

