

Vest Tunic With Side Slits - Sewing Pattern #2747

Recommendations on fabric: natural/mixed suiting fabrics.

You will also need: fusible interfacing, 6 buttons.

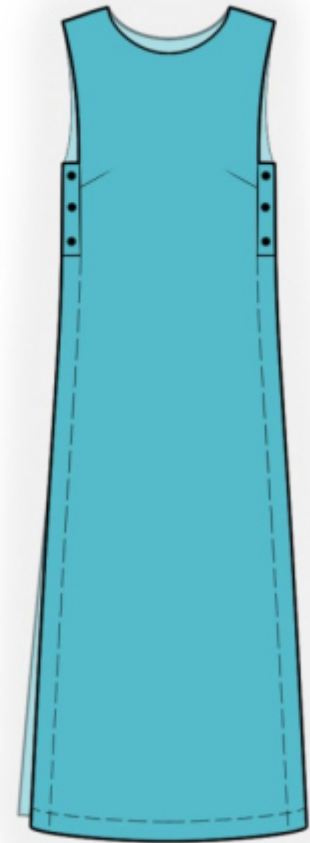
Seam allowances: all seams 1 cm. Seam allowance along the side edges of the front and of the back - 5 cm. Seam allowance along the lower edge of the garment - 3 cm.

Note on seam allowances:

- If the pattern has double contour the seam allowances are included. They are 1 cm unless specified otherwise.
- If the pattern has single contour, the seam allowances are NOT included and need to be added when laying out the pattern.

Note on length of fabric:

Attention! The amount of fabric needed for your pattern is not included. It will depend on the selected pattern size, the width, and design of the fabric you plan to use. First, print all the paper patterns and lay them out at the width of fabric you plan to use (usually from 90 to 150 cm). Measure how much fabric you will need. Don't forget to account for pieces that need to be cut multiple times and pieces that are cut on the fold.



CUTTING:

Note on cutting:

On the pattern pieces, "beam" means straight of grain. Lay out your pieces accordingly. Some pieces will be cut on the fold. This is noted on the pattern piece. Mark all notches and other design features such as pleats etc. from the pattern onto your fabric.

When sewing the garment, pay attention to notches, they must match up.

Main fabric:

1. Back - cut 1 on fold
2. Front - cut 1 on fold
3. Back neck facing - cut 1
4. Front neck facing — cut 1
5. Closure - cut 2

Fusible interfacing:

1. Back neck facing – cut 1
2. Front neck facing — cut 1
3. Closure – cut 2

INSTRUCTIONS:

1. Apply fusible interfacing.
2. Sew front darts, press bulk towards top.
3. Sew shoulder seams, press towards the back and serge.
4. Cut or use ready-made bias tape, its width should equal 4 cm and length should equal the length of armhole + 4 cm. Fold bias tape in half lengthwise right side out and press. Pin bias tape to armhole edge from the right side and sew. Finish the armhole on the back only up to the marked line of closure. Clip into seam allowances. Fold bias tape onto wrong side and topstitch onto main piece along the seam. Press seam.
5. Sew the closure piece to the front piece along the side edge and along the horizontal edge. Snip into seam allowance on the front, press the seam allowances towards the closure. Serge the side seam allowance on the front, starting from the top of the closure. Sew the upper edge of the closure, trim seam allowances. Fold the closure and the seam allowance onto the wrong side, press. Topstitch the seam allowances on the closure into the seam, topstitch the seam allowances on the front along the side seam.
6. Serge the side seam allowance on the back. Sew the upper corner of the one-piece closure on the back. Fold the seam allowances of the back onto wrong side and topstitch.
7. Sew the shoulder edges of the front neckline facing and of the back facing, press the seam apart. Serge the outer edge. Pin the facings onto the front and onto the back, right sides together and sew neckline. Clip into curves, facings fold onto wrong side, straighten, press. Baste facings to shoulder seams.
8. Serge lower edge, press onto wrong side and topstitch.
9. Make button holes on the closure pieces. Sew on buttons according to button holes.

TECHNICAL DRAWING:

