

Sewing Pattern — Dress 5959

Recommendations on fabric: knit fabric.

You will also need: silky fabric for decorative pieces, interfacing.

If the pattern has a double line around it, the seam allowances are included.

Note: By default, seam allowances are NOT included (single line) and will need to be added when laying out and cutting details.

Seam allowance : on hem of dress – 1.5 cm, all other seams – 1 cm.

Attention! First of all, please print all the paper patterns and lay them out at the width of fabric you plan to use (usually from 90 to 150 cm) to see how much fabric you will need. Don't forget to take into account pieces to be duplicated or cut on a fold.

When sewing the garment, pay attention to notches. They must match up with corresponding pieces.

CUTTING:

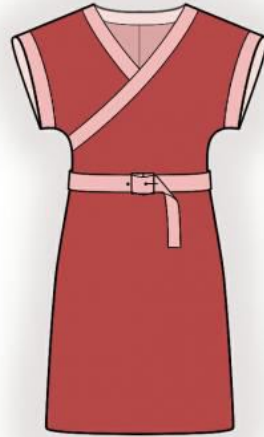
The word, “beam” used on some patterns means “straight of grain”. Some pieces will be cut on the fold, this is noted on the pattern piece. Mark all notches and other design features such as darts, pleats etc. from the pattern onto your fabric. Darts: The fold of the dart is always pressed toward the center of your garment, or down toward the hem.

Main fabric:

1. Back – cut 2
2. Front – cut 1
3. Upper front – cut 1
4. Back facing – cut 2
5. Front facing – cut 2
6. Upper front facing – cut 2
7. Sleeve facing – cut 2

Interfacing:

All internal front and back facings



INSTRUCTIONS:

1. Apply interfacing.
2. Sew center back seam. Serge and press.
3. Sew shoulder seams. Serge and press towards back.
4. Sew shoulder seams on facings. Press towards back.
5. Put facings and bodice together, right sides together and sew the neckline. Serge and press onto facing.
6. Put together interfaced facings and facings sewn into neckline of back and upper front together, right sides together. Sew the neckline on facings on back and upper front (not on front!). Turn the facing right side out and press.
7. Turn the seam allowance of interfaced front facing inside and topstitch into seam. Stop stitching near shoulder seam. Press the seam.
8. Put the front facings together, right sides together, and put the upper front between them. Sew the seam and press. Turn the seam allowance of interfaced front facing inside and topstitch into seam.
9. Sew sleeve seam and continue sewing side seam. Serge and press onto back.
10. Sew sleeve facing into a ring. Press the seam. Turn facing right side out and fold in half lengthwise. Sew facing to the sleeve, placing the seam of facing next to the side seam. Serge and press.
11. Serge bottom edge of dress, press onto wrong side, and topstitch.

TECHNICAL DRAWING:

