

Dress With One-Piece Sleeves - Sewing Pattern #2694

Recommendations on fabric: natural/mixed fabric suitable for dresses.

You will also need: fusible interfacing, dress zipper.

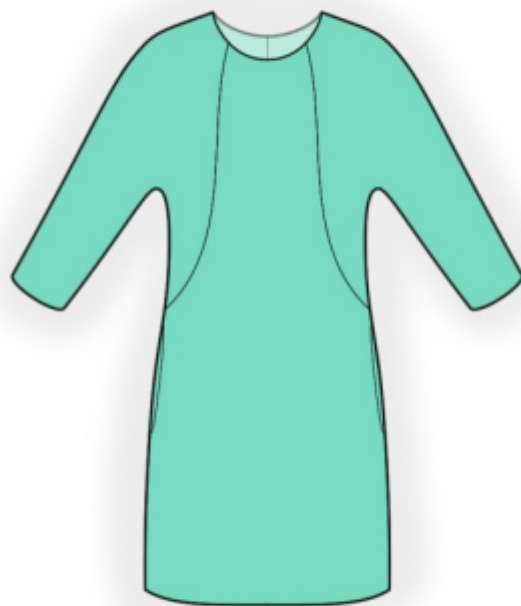
Seam allowances: all seams 1 cm; seam allowance for hem of dress and hem of sleeve – 2.0 cm, seam allowance along the slit – 2.5 cm.

Note on seam allowances:

- If the pattern has double contour the seam allowances are included. They are 1 cm unless specified otherwise.
- If the pattern has single contour, the seam allowances are NOT included and need to be added when laying out the pattern.

Note on length of fabric:

Attention! The amount of fabric needed for your pattern is not included. It will depend on the selected pattern size, the width, and design of the fabric you plan to use. First, print all the paper patterns and lay them out at the width of fabric you plan to use (usually from 90 to 150 cm). Measure how much fabric you will need. Don't forget to account for pieces that need to be cut multiple times and pieces that are cut on the fold.



CUTTING:

Note on cutting:

On the pattern pieces, "beam" means straight of grain. Lay out your pieces accordingly. Some pieces will be cut on the fold. This is noted on the pattern piece. Mark all notches and other design features such as pleats etc. from the pattern onto your fabric.

When sewing the garment, pay attention to notches, they must match up.

Main fabric:

1. Back - cut 2
2. Front - cut 1 on fold
3. Back sleeve — cut 2
4. Front sleeve — cut 2
5. Back neck facing - cut 2
6. Front neck facing - cut 1
7. Pocket bag - cut 4

Fusible interfacing:

1. Back neck facing - cut 2
2. Front neck facing - cut 1

INSTRUCTIONS:

1. Apply fusible interfacing to facings. Apply fusible interfacing to the seam allowance along the back slit.
2. Serge the center back edges separately. Sew center back seam from notch for zipper down to notch for slit. Press seam apart, pressing the slit for zipper and hem slit at the same time. Sew in zipper. Topstitch hem slit at 0.1 cm from fold.
3. Sew back sleeve to back, press seam allowances towards sleeve, serge. Sew front sleeve to front, press seam allowances towards sleeve, serge.
4. Sew shoulder seams, press towards the back and serge.
5. Sew the bag pockets to the front and to the back, serge. Sew the sleeve seam and continue sewing the side sleeve and the edges of the pocket bags. Press seams towards back and serge.
6. Sew the shoulder seams of the neckline facings, press the seam apart. Serge the outer edge. Pin facing to garment right sides together and sew the neckline. Clip into curves, turn the facings onto the wrong side and press. Slipstitch to shoulder seams and to zipper tape.
7. Serge the hem of the garment and the hem of sleeve, press onto wrong side and finish with hidden stitches.

TECHNICAL DRAWING:

