

Belt With Pockets - Sewing Pattern #2697

Recommendations on fabric: natural/mixed suiting fabrics.

You will also need fusible interfacing; 2 zippers; buckle; grommets.

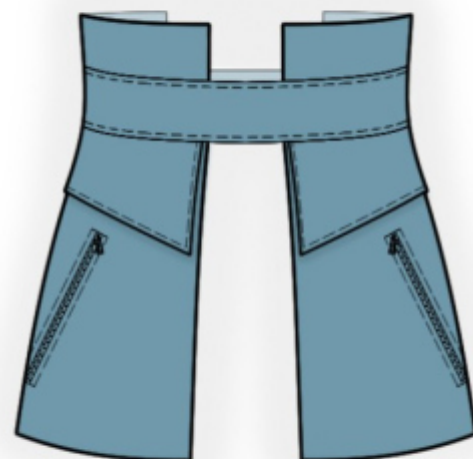
Seam allowances: all seams 1 cm.

Note on seam allowances:

- If the pattern has double contour the seam allowances are included. They are 1 cm unless specified otherwise.
- If the pattern has single contour, the seam allowances are NOT included and need to be added when laying out the pattern.

Note on length of fabric:

Attention! The amount of fabric needed for your pattern is not included. It will depend on the selected pattern size, the width, and design of the fabric you plan to use. First, print all the paper patterns and lay them out at the width of fabric you plan to use (usually from 90 to 150 cm). Measure how much fabric you will need. Don't forget to account for pieces that need to be cut multiple times and pieces that are cut on the fold.



CUTTING:

Note on cutting:

On the pattern pieces, "beam" means straight of grain. Lay out your pieces accordingly. Some pieces will be cut on the fold. This is noted on the pattern piece. Mark all notches and other design features such as pleats etc. from the pattern onto your fabric.

When sewing the garment, pay attention to notches, they must match up.

Main fabric:

1. Belt - cut 2
2. Upper inset - cut 2
3. Pocket - cut 4
4. Lower inset - cut 4

Fusible interfacing:

1. Belt - cut 1

2. Upper inset - cut 2
3. Pocket - cut 2
4. Lower inset - cut 2

INSTRUCTIONS:

1. Apply fusible interfacing.
2. Pin the upper inset in half lengthwise right sides together and sew side edges. Trim seam allowances, turn right side out and press.
3. Mark the position of pockets with parallel lines. Cut the slit for pocket opening. Slash diagonally at 1-1.5 cm from the end of the marked slit. Turn the seam allowances onto the wrong side through the resulting opening, straighten edges. Pin zipper under the opening so that you can see the teeth and sew.
4. Pin pockets together right sides together and sew along the side edges and along the lower edge. Serge the seam allowances. Turn right side out pocket onto right side and press.
5. Pin the lower insets together pairwise right sides together and sew along the side edges and along the lower edge. Trim seam allowances, turn right side out and press. Pin the inset onto the pocket and baste together along upper edge.
6. Pin waistbands together, right sides together and sew lower and side edges, inserting pocket. Trim away corners. Turn belt right side out. Fold under the upper seam allowances, insert the upper inset, and sew together.
7. Thread the buckle into the left side of the belt and fix it, install grommets on the right side of the belt.

TECHNICAL DRAWING:

